

ELBLĄG	27,90%	29,80%	28,20%	27,20%	30,20%	28,40%	31,60%	30,10%	33,90%	32,20%	36,10%	35,22%	40,83%	35,53%	43,81%	32,05%	38,62%	30,63%	38,26%
OPOLE	35,80%	32,70%	28,40%	28,90%	29,50%	29,10%	29,80%	27,40%	27,30%	28,80%	28,80%	26,88%	30,41%	26,67%	28,66%	27,58%	28,57%	30,54%	34,25%
CZĘSTOCHOWA	37,90%	35,80%	33,70%	31,70%	33,80%	28,70%	30,90%	28,20%	31,00%	25,70%	28,90%	27,94%	32,76%	30,00%	34,65%	27,52%	31,14%	30,17%	35,96%
WAŁBRZYCH	22,90%	28,90%	24,80%	23,70%	20,60%	26,07%	25,72%	24,19%	22,15%	26,78%	26,06%	25,74%	24,25%	28,09%	28,28%	31,05%	32,41%	30,00%	34,09%
SŁUPSK	29,50%	29,00%	29,70%	28,70%	26,50%	27,90%	26,30%	27,40%	27,20%	26,60%	26,50%	28,22%	32,38%	32,70%	37,37%	29,42%	33,45%	29,92%	35,00%
ZAMOŚĆ	30,30%	31,30%	29,20%	26,00%	27,20%	24,30%	24,20%	24,50%	25,90%	27,70%	30,00%	28,70%	35,28%	30,93%	35,37%	31,59%	36,79%	29,92%	37,64%
PIOTRKÓW TRY	32,90%	36,50%	32,90%	31,50%	34,30%	30,40%	31,90%	29,70%	29,80%	29,40%	30,80%	31,80%	37,10%	33,50%	38,89%	31,44%	34,23%	29,31%	32,27%
POZNAŃ	41,90%	42,50%	37,70%	35,90%	39,20%	31,30%	33,60%	32,20%	33,40%	30,00%	30,70%	31,00%	31,31%	30,50%	33,72%	30,50%	33,18%	29,22%	32,18%
BYDGOSZCZ	33,95%	30,70%	28,00%	30,20%	30,60%	27,60%	30,00%	25,80%	26,30%	26,30%	25,80%	25,28%	29,06%	28,96%	33,72%	30,16%	36,64%	28,85%	33,85%
GDAŃSK	29,05%	29,32%	31,53%	25,49%	25,10%	23,90%	24,25%	23,70%	23,30%	22,20%	21,20%	26,77%	27,81%	27,57%	31,01%	29,43%	34,15%	28,04%	31,84%
SZCZECIN	35,60%	37,10%	31,60%	27,10%	28,20%	27,60%	28,00%	24,10%	24,10%	23,00%	21,70%	25,06%	25,03%	25,39%	27,16%	27,77%	29,77%	27,45%	29,99%
ŁÓDŹ	22,00%	24,70%	24,30%	23,20%	21,26%	22,79%	21,06%	22,60%	21,76%	21,60%	20,16%	22,12%	21,93%	28,16%	29,66%	26,24%	26,41%	26,33%	27,93%
PIŁA	36,10%	34,30%	32,30%	29,00%	31,60%	24,80%	25,20%	24,50%	25,60%	24,70%	26,50%	25,30%	28,70%	26,70%	30,47%	25,09%	27,51%	25,27%	29,46%
KOSZALIN	29,10%	27,90%	25,60%	25,70%	26,10%	27,10%	29,30%	25,00%	25,90%	23,40%	24,80%	21,83%	23,71%	23,57%	27,00%	21,25%	23,86%	21,58%	24,74%
	2006R	2007R	2008R	2009R	2009R	2010R	2010R	2011R	2011R	2012R	2012R	2013R	2013R	2014R	2014R	2015R	2015R	2016R	2016R
	Global	Global	Global	Global	IP	Global	IP	Global	IP	Global	IP	Global	IP	Global	IP	Global	IP	Global	IP
MAXIMUM	47,10%	45,70%	45,90%	43,50%	50,10%	48,00%	52,40%	46,00%	52,90%	47,21%	53,65%	47,60%	54,88%	52,87%	58,04%	51,36%	58,03%	51,52%	58,84%
MINIMUM	22,00%	24,70%	24,30%	23,20%	20,60%	22,79%	21,06%	22,60%	21,76%	21,60%	20,16%	21,83%	21,93%	23,57%	27,00%	21,25%	23,86%	21,58%	24,74%
ŚREDNIA	32,51%	32,71%	32,06%	30,97%	32,24%	30,82%	32,29%	30,84%	32,31%	30,67%	32,40%	31,45%	35,38%	34,49%	38,52%	34,49%	38,29%	34,06%	39,25%

legenda:

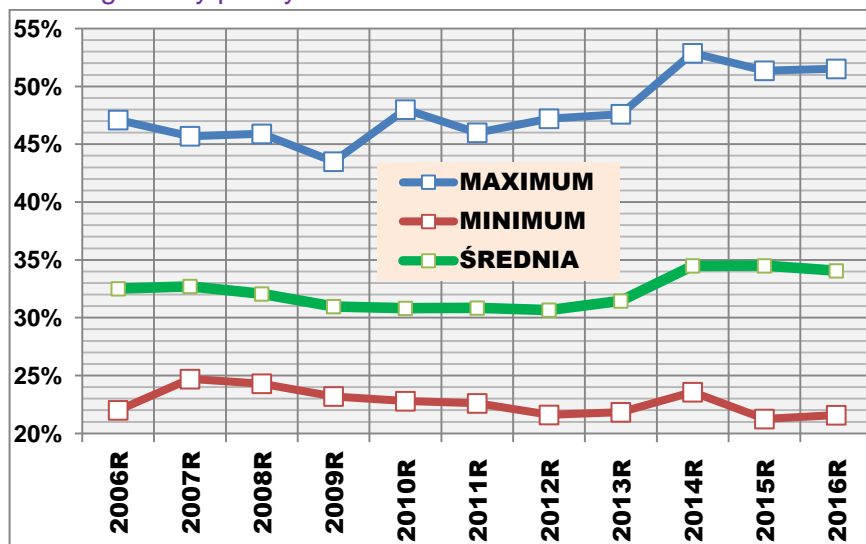
"global" [P/L]

- P liczba wyników pozytywnych / L liczba egzaminów faktycznie przeprowadzonych,

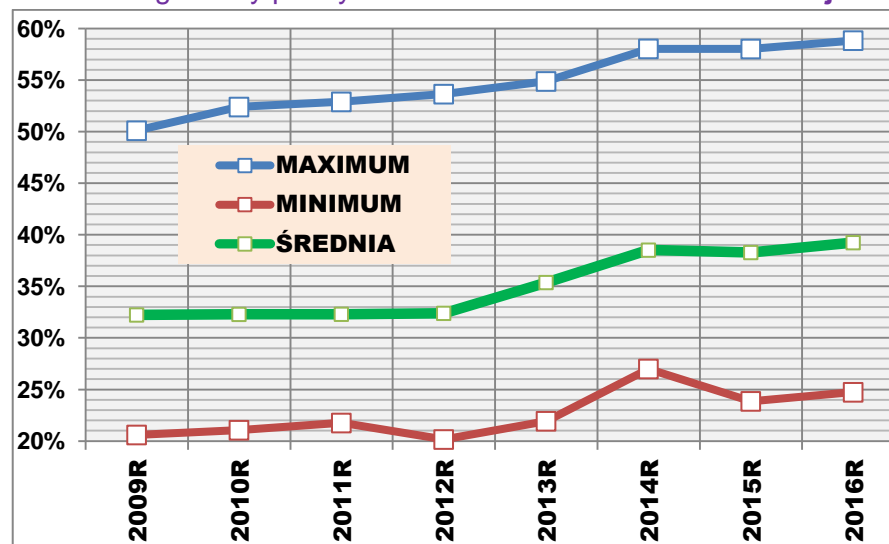
"I podejście " po szkoleniu podstawowym

- P liczba wyników pozytywnych / L liczba egzaminów faktycznie przeprowadzonych (z uwzględnieniem nie przeprowadzonych).

Egzaminy praktyczne kat. B wariant "Global"



Egzaminy praktyczne kat. B wariant "Pierwsze Podejście"



Dziesięć WORD-ów z górnej i dolnej "półki"

Egzaminy praktyczne kat. B wariant "Global" uporządkowanie wg. 2016r

Miejsce 2016	WORD \ Rok	2011R	2012R	2013R	2014R	2015R	2016R	
1	OSTROŁĘKA	46,00%	47,21%	47,60%	52,87%	51,36%	51,52%	WO
2	ŁOMŻA	42,80%	42,30%	46,10%	49,45%	46,60%	46,18%	BL
3	JELENIA G.	29,40%	29,30%	32,17%	38,09%	43,46%	45,33%	DJ
4	PŁOCK	35,40%	36,70%	38,62%	43,91%	41,59%	43,60%	WP
5	RZESZÓW	39,10%	38,70%	36,43%	44,54%	41,91%	41,50%	RZ
6	WŁOCŁAWEK	27,40%	31,60%	33,43%	39,49%	40,91%	40,87%	CW
7	SUWAŁKI	39,90%	39,00%	41,60%	44,77%	43,21%	39,89%	BS
8	BIAŁYSTOK	30,70%	26,90%	28,28%	34,68%	38,00%	39,79%	BI
9	TARNOBRZEG	30,60%	31,70%	33,89%	41,02%	39,90%	39,25%	RT
10	SIEDLCE	34,30%	34,00%	35,20%	38,43%	40,37%	38,98%	WS
...								
40	SŁUPSK	27,40%	26,60%	28,22%	32,70%	29,42%	29,92%	GS
41	ZAMOŚĆ	24,50%	27,70%	28,70%	30,93%	31,59%	29,92%	LZ
42	PIOTRKÓW Tryb	29,70%	29,40%	31,80%	33,50%	31,44%	29,31%	EP
43	POZNAŃ	32,20%	30,00%	31,00%	30,50%	30,50%	29,22%	PO
44	BYDGOSZCZ	25,80%	26,30%	25,28%	28,96%	30,16%	28,85%	CB
45	GDAŃSK	23,70%	22,20%	26,77%	27,57%	29,43%	28,04%	GA
46	SZCZECIN	24,10%	23,00%	25,06%	25,39%	27,77%	27,45%	ZS
47	ŁÓDŹ	22,60%	21,60%	22,12%	28,16%	26,24%	26,33%	EL
48	PIŁA	24,50%	24,70%	25,30%	26,70%	25,09%	25,27%	PP
49	KOSZALIN	25,00%	23,40%	21,83%	23,57%	21,25%	21,58%	ZK
		2011R	2012R	2013R	2014R	2015R	2016R	

Miejsca w latach: 2011 - 2016

Miejsce \ Rok	2011R	2012R	2013R	2014R	2015R	2016R	
1	WO	WO	WO	WO	WO	WO	
2	BL	BL	BL	BL	BL	BL	
3	BS	BS	BS	BS	DJ	DJ	
4	KN	RZ	WP	RZ	KR	WP	
5	RZ	KN	RZ	WP	BS	RZ	
6	RK	WP	NO	RT	RZ	CW	
7	NO	FZ	FZ	LB	WP	BS	
8	WP	NO	NE	WC	CW	BI	
9	WC	RP	WS.	CW	WS.	RT	
10	WS.	WS.	KN	RK	RT	WS.	
...							
40	GS	DB	SC	SC	CB	GS	
41	CB	ES	SK	CB	DW	LZ	
42	ZK	GS	OP	SK	GA	EP	
43	LZ	CB	GA	EL	GS	PO	
44	PP	SC	DB	DB	ZS	CB	
45	DW	PP	PP	GA	OP	GA	
46	DB	ZK	CB	PP	SC	ZS	
47	ZS	ZS	ZS	OP	EL	EL	
48	GA	GA	ZS	ZS	PP	PP	
49	EL	EL	ZK	ZK	ZK	ZK	

opracował: **Roman Stencel**

kopiowanie, przetwarzanie, publikowanie
bez zgody **zabronione!**

Ranking Word-ów średnia zdawalność egzaminów praktycznych kat. B wariant "Global" narastająco w latach 2011 - 2016

Word	Wyróż.	2011	2012	2013	2014	2015	2016	Σ	Miejsce 2011-2016
OSTROŁĘKA	WO	1	1	1	1	1	1	6	1
ŁOMŻA	BL	2	2	2	2	2	2	12	2
SUWAŁKI	BS	3	3	3	3	5	7	24	3
RZESZÓW	RZ	5	4	5	4	6	5	29	4
PŁOCK	WP	8	6	4	5	7	4	34	5
OLSZTYN	NO	7	8	6				21	6
WŁOCŁAWEK	CW				9	8	6	23	7
KROSNO	RK	6			10			16	8
TARNOBRZEG	RT				6	10	9	25	9
SIEDLCE	WS	10	10	9	0	9	10	48	10
SKIERNIEWICE	ES		41					41	40
SŁUPSK	GS	40	42			43	40	165	41
BYDGOSZCZ	CB	41	43	46	41	40	44	255	42
WAŁBRZYCH	DB	46	40	44	44			174	43
OPOLE	OP			42	47			89	44
GDAŃSK	GA	48	48	43	45	42	45	271	45
PIŁA	PP		45	45	46			136	46
SZCZECIN	ZS	47	47	47	48	44	46	279	47
ŁÓDŹ	EL	49	49	48	43	47	47	283	48
KOSZALIN	ZK	42	46	49	49	49	49	284	49

opracował: **Roman Stencel**

kopiowanie, przetwarzanie, publikowanie bez zgody **zabronione!**