

Zdawalność egzaminów praktycznych kat. B prawa jazdy / na podstawie danych pozyskanych z 49 WORD-ów (Wojewódzki Ośrodek Ruchu Drogowego)

uporządkowanie wg. **Global 2017**

	Global	Global	Global	Global	I podejście	Global	I podejście	Global	I podejście	Global	I podejście	Global	I podejście	Global	I podejście	Global	I podejście	Global	I podejście	Global	I podejście
WORD \ Rok	2006R	2007R	2008R	2009R	2009R	2010R	2010R	2011R	2011R	2012R	2012R	2013R	2013R	2014R	2014R	2015R	2015R	2016R	2016R	2017R	2017R
OSTROŁĘKA	47,10%	44,30%	45,90%	43,20%	50,10%	48,00%	52,40%	46,00%	52,90%	47,21%	53,65%	47,60%	54,88%	52,87%	58,04%	51,36%	58,03%	51,52%	58,84%	54,19%	60,28%
JELEŃ G.	30,60%	26,60%	27,30%	26,00%	27,30%	27,80%	29,30%	29,40%	31,40%	29,30%	30,50%	32,17%	32,83%	38,09%	43,33%	43,46%	47,44%	45,33%	51,67%	46,91%	52,74%
PŁOCK	37,70%	35,20%	31,30%	31,00%	34,50%	34,20%	37,50%	35,40%	39,70%	36,70%	40,10%	38,62%	47,55%	43,91%	50,15%	41,59%	47,68%	43,60%	50,34%	46,85%	55,34%
ŁOMŻA	41,70%	41,80%	42,90%	43,50%	43,20%	43,70%	43,30%	42,80%	41,80%	42,30%	41,00%	46,10%	47,20%	49,45%	53,23%	46,60%	50,54%	46,18%	51,19%	46,18%	51,17%
RZESZÓW	31,50%	34,80%	33,60%	35,80%	37,70%	36,90%	40,10%	39,10%	41,70%	38,70%	41,30%	36,43%	43,58%	44,54%	49,59%	41,91%	45,90%	41,50%	46,62%	42,43%	50,23%
SUWAŁKI	35,60%	32,60%	36,70%	38,60%	40,70%	39,40%	43,00%	39,90%	43,20%	39,00%	43,50%	41,60%	48,20%	44,77%	50,48%	43,21%	47,96%	39,89%	47,76%	42,03%	50,26%
WŁOCŁAWEK	30,90%	30,90%	28,60%	27,20%	28,20%	24,60%	26,70%	27,40%	31,20%	31,60%	35,80%	33,43%	41,24%	39,49%	46,03%	40,91%	47,78%	40,87%	49,18%	41,21%	48,31%
SIEDLCE	32,20%	31,30%	32,80%	32,10%	34,40%	34,10%	36,80%	34,30%	37,20%	34,00%	37,90%	35,20%	41,92%	38,43%	44,95%	40,37%	45,88%	38,98%	47,04%	41,06%	49,70%
WROCŁAW	30,90%	31,60%	29,90%	28,90%	28,30%	25,10%	25,50%	24,30%	22,60%	27,20%	26,50%	29,97%	30,20%	30,51%	32,09%	29,46%	30,78%	35,78%	38,19%	39,88%	42,96%
TARNOBRZEG	30,50%	32,30%	30,60%	28,50%	30,40%	31,20%	33,00%	30,60%	32,60%	31,70%	35,00%	33,89%	40,86%	41,02%	48,75%	39,90%	46,40%	39,25%	47,06%	39,79%	47,47%
BIAŁYSTOK	30,90%	30,30%	33,70%	31,80%	33,20%	31,60%	30,80%	30,70%	29,40%	26,90%	26,40%	28,28%	31,30%	34,68%	37,07%	38,00%	41,82%	39,79%	44,13%	38,71%	42,60%
LUBLIN	28,30%	28,90%	27,80%	26,70%	26,20%	28,10%	29,10%	29,60%	29,90%	29,40%	29,70%	30,49%	32,67%	31,83%	33,67%	32,68%	35,69%	34,66%	39,09%	37,82%	43,08%
KALISZ	31,90%	36,20%	35,60%	32,20%	36,60%	31,20%	35,80%	31,00%	35,00%	29,70%	32,70%	30,25%	33,96%	31,90%	35,67%	32,19%	35,82%	33,80%	39,84%	37,40%	45,15%
LESZNO	26,50%	30,80%	30,90%	28,10%	30,90%	33,90%	39,90%	31,70%	36,30%	29,30%	33,20%	30,26%	34,84%	34,25%	37,96%	33,85%	39,34%	33,94%	40,24%	37,34%	45,34%
Biała Podlaska	30,70%	31,00%	29,20%	28,20%	28,10%	27,90%	27,50%	31,60%	33,20%	32,10%	34,60%	31,77%	38,00%	40,66%	45,01%	39,64%	44,27%	38,02%	44,45%	37,04%	44,13%
KRAKÓW	32,60%	29,80%	29,20%	31,60%	32,20%	30,50%	31,00%	29,13%	28,84%	30,17%	28,82%	30,71%	32,93%	34,61%	37,23%	43,27%	40,29%	38,30%	42,31%	36,29%	40,41%
CIECHANÓW	32,40%	31,10%	30,80%	31,10%	35,70%	35,70%	40,30%	35,10%	41,80%	30,20%	36,50%	32,32%	40,55%	39,77%	46,90%	36,40%	43,05%	33,09%	40,07%	35,93%	43,78%
SKIERNIEWICE	26,20%	31,00%	30,00%	31,30%	31,10%	29,00%	28,00%	27,70%	25,10%	26,70%	25,30%	28,30%	29,47%	30,40%	28,93%	33,87%	33,49%	31,86%	34,09%	35,84%	37,49%
OLSZTYN	32,40%	35,30%	36,00%	35,40%	38,10%	36,80%	40,10%	36,80%	39,60%	34,50%	38,90%	36,32%	40,68%	33,27%	38,68%	34,63%	38,17%	34,84%	40,18%	35,69%	41,87%
SIERADZ	36,90%	36,50%	34,90%	33,90%	37,80%	33,90%	38,80%	32,40%	36,50%	31,00%	35,00%	31,64%	37,81%	35,19%	40,80%	32,97%	37,98%	33,10%	39,67%	35,40%	41,87%
PRZEMYŚL	37,70%	31,10%	27,70%	27,50%	27,30%	30,80%	31,40%	34,00%	35,20%	34,20%	36,60%	32,52%	36,68%	37,76%	41,23%	38,29%	41,83%	33,34%	37,80%	35,39%	40,88%
NOWY SĄCZ	38,50%	38,10%	39,00%	38,40%	41,00%	40,30%	41,80%	39,80%	39,80%	36,89%	38,33%	34,43%	38,11%	33,07%	33,97%	34,91%	36,85%	36,23%	40,25%	35,11%	40,10%
KROSNO	43,80%	45,70%	43,90%	38,40%	43,80%	35,90%	38,70%	36,90%	41,00%	33,80%	38,10%	32,51%	38,30%	38,56%	46,57%	38,83%	47,26%	37,07%	45,62%	34,88%	45,19%
KONIN	32,70%	33,30%	33,40%	32,10%	32,60%	29,80%	30,90%	30,60%	31,00%	30,10%	31,50%	30,87%	33,67%	31,18%	36,11%	32,85%	38,22%	34,19%	41,09%	34,71%	41,45%
RADOM	33,50%	31,40%	36,10%	32,40%	36,20%	32,10%	35,90%	32,70%	36,70%	33,60%	37,70%	33,17%	40,61%	37,34%	42,85%	36,80%	41,90%	35,34%	41,77%	34,32%	40,20%
WARSZAWA	29,30%	28,90%	30,00%	27,30%	24,30%	25,50%	22,20%	28,00%	24,90%	29,00%	26,00%	31,40%	30,60%	32,46%	32,22%	33,12%	34,15%	32,63%	33,89%	34,03%	34,32%
ZAMOŚĆ	30,30%	31,30%	29,20%	26,00%	27,20%	24,30%	24,20%	24,50%	25,90%	27,70%	30,00%	28,70%	35,28%	30,93%	35,37%	31,59%	36,79%	29,92%	37,64%	33,69%	42,27%
CHEŁM	27,60%	26,80%	29,20%	29,70%	31,60%	29,80%	31,70%	28,10%	29,40%	29,00%	31,90%	29,53%	34,28%	32,64%	36,83%	31,91%	35,61%	32,72%	38,83%	33,65%	40,35%
TORUŃ	38,90%	39,30%	34,80%	31,10%	32,90%	29,10%	31,80%	28,90%	30,20%	29,00%	30,60%	30,78%	36,21%	33,28%	38,22%	33,37%	37,33%	34,43%	41,18%	33,56%	40,61%
WAŁBRZYCH	22,90%	28,90%	24,80%	23,70%	20,60%	26,07%	25,72%	24,19%	22,15%	26,78%	26,06%	25,74%	24,25%	28,09%	28,28%	31,05%	32,41%	30,00%	34,09%	33,47%	38,63%
KIELCE	27,20%	27,00%	30,60%	29,90%	28,30%	28,40%	28,60%	28,60%	30,20%	29,10%	30,70%	29,10%	31,12%	31,64%	34,91%	31,46%	36,13%	31,57%	36,66%	33,33%	39,57%
Zielona G.	26,70%	30,50%	30,60%	30,20%	30,50%	31,60%	32,30%	33,70%	35,30%	34,80%	35,00%	36,06%	39,35%	37,64%	40,59%	35,68%	37,87%	32,31%	36,94%	32,71%	37,88%
BIELSKO BIAŁA	32,10%	32,80%	34,60%	31,70%	29,20%	32,50%	30,80%	32,30%	30,20%	30,20%	28,90%	31,21%	30,89%	33,86%	34,84%	34,38%	35,90%	32,02%	32,87%	32,41%	35,36%

LEGNICA	30,30%	26,90%	29,80%	30,40%	30,90%	31,00%	32,90%	31,00%	33,20%	32,80%	36,00%	32,59%	38,23%	35,34%	41,52%	33,75%	38,26%	30,88%	35,68%	32,02%	35,71%
TARNÓW	26,40%	28,50%	31,90%	32,40%	34,80%	29,10%	31,10%	29,90%	32,70%	31,50%	35,70%	33,42%	38,78%	35,48%	40,92%	33,75%	39,68%	31,98%	39,45%	31,66%	40,51%
SŁUPSK	29,50%	29,00%	29,70%	28,70%	26,50%	27,90%	26,30%	27,40%	27,20%	26,60%	26,50%	28,22%	32,38%	32,70%	37,37%	29,42%	33,45%	29,92%	35,00%	31,37%	39,40%
PIOTRKÓW TR	32,90%	36,50%	32,90%	31,50%	34,30%	30,40%	31,90%	29,70%	29,80%	29,40%	30,80%	31,80%	37,10%	33,50%	38,89%	31,44%	34,23%	29,31%	32,27%	31,10%	35,92%
KATOWICE	30,60%	35,20%	31,30%	35,60%	35,50%	31,40%	33,20%	30,50%	32,70%	30,10%	32,50%	27,74%	31,79%	28,50%	31,65%	30,36%	34,02%	30,71%	35,16%	30,75%	36,11%
CZĘSTOCHOWA	37,90%	35,80%	33,70%	31,70%	33,80%	28,70%	30,90%	28,20%	31,00%	25,70%	28,90%	27,94%	32,76%	30,00%	34,65%	27,52%	31,14%	30,17%	35,96%	30,72%	36,85%
POZNAŃ	41,90%	42,50%	37,70%	35,90%	39,20%	31,30%	33,60%	32,20%	33,40%	30,00%	30,70%	31,00%	31,31%	30,50%	33,72%	30,50%	33,18%	29,22%	32,18%	30,43%	33,24%
GORZÓW Wlkp.	35,20%	34,70%	32,50%	31,00%	31,80%	29,10%	28,40%	32,00%	32,90%	32,50%	33,50%	28,52%	33,73%	33,34%	36,83%	33,31%	36,12%	31,88%	36,56%	30,14%	37,27%
BYDGOSZCZ	33,95%	30,70%	28,00%	30,20%	30,60%	27,60%	30,00%	25,80%	26,30%	26,30%	25,80%	25,28%	29,06%	28,96%	33,72%	30,16%	36,64%	28,85%	33,85%	29,83%	36,57%
GDAŃSK	29,05%	29,32%	31,53%	25,49%	25,10%	23,90%	24,25%	23,70%	23,30%	22,20%	21,20%	26,77%	27,81%	27,57%	31,01%	29,43%	34,15%	28,04%	31,84%	29,71%	35,94%
ELBLĄG	27,90%	29,80%	28,20%	27,20%	30,20%	28,40%	31,60%	30,10%	33,90%	32,20%	36,10%	35,22%	40,83%	35,53%	43,81%	32,05%	38,62%	30,63%	38,26%	29,47%	35,19%
OPOLE	35,80%	32,70%	28,40%	28,90%	29,50%	29,10%	29,80%	27,40%	27,30%	28,80%	28,80%	26,88%	30,41%	26,67%	28,66%	27,58%	28,57%	30,54%	34,25%	29,19%	32,77%
ŁÓDŹ	22,00%	24,70%	24,30%	23,20%	21,26%	22,79%	21,06%	22,60%	21,76%	21,60%	20,16%	22,12%	21,93%	28,16%	29,66%	26,24%	26,41%	26,33%	27,93%	28,04%	30,66%
SZCZECIN	35,60%	37,10%	31,60%	27,10%	28,20%	27,60%	28,00%	24,10%	24,10%	23,00%	21,70%	25,06%	25,03%	25,39%	27,16%	27,77%	29,77%	27,45%	29,99%	27,90%	31,40%
PIŁA	36,10%	34,30%	32,30%	29,00%	31,60%	24,80%	25,20%	24,50%	25,60%	24,70%	26,50%	25,30%	28,70%	26,70%	30,47%	25,09%	27,51%	25,27%	29,46%	27,50%	33,70%
KOSZALIN	29,10%	27,90%	25,60%	25,70%	26,10%	27,10%	29,30%	25,00%	25,90%	23,40%	24,80%	21,83%	23,71%	23,57%	27,00%	21,25%	23,86%	21,58%	24,74%	23,16%	27,51%
	2006R	2007R	2008R	2009R	2009R	2010R	2010R	2011R	2011R	2012R	2012R	2013R	2013R	2014R	2014R	2015R	2015R	2016R	2016R	2017R	2017R
	Global	Global	Global	Global	IP	Global	IP	Global	IP	Global	IP	Global	IP	Global	IP	Global	IP	Global	IP	Global	IP
MAXIMUM	47,10%	45,70%	45,90%	43,50%	50,10%	48,00%	52,40%	46,00%	52,90%	47,21%	53,65%	47,60%	54,88%	52,87%	58,04%	51,36%	58,03%	51,52%	58,84%	54,19%	60,28%
MINIMUM	22,00%	24,70%	24,30%	23,20%	20,60%	22,79%	21,06%	22,60%	21,76%	21,60%	20,16%	21,83%	21,93%	23,57%	27,00%	21,25%	23,86%	21,58%	24,74%	23,16%	27,51%
ŚREDNIA	32,51%	32,71%	32,06%	30,97%	32,24%	30,82%	32,29%	30,84%	32,31%	30,67%	32,40%	31,45%	35,38%	34,49%	38,52%	34,49%	38,29%	34,06%	39,25%	35,15%	41,02%

legenda:

"global" [P/L]

- P liczba wyników pozytywnych / L liczba egzaminów faktycznie przeprowadzonych (kol.10 – kol.19),

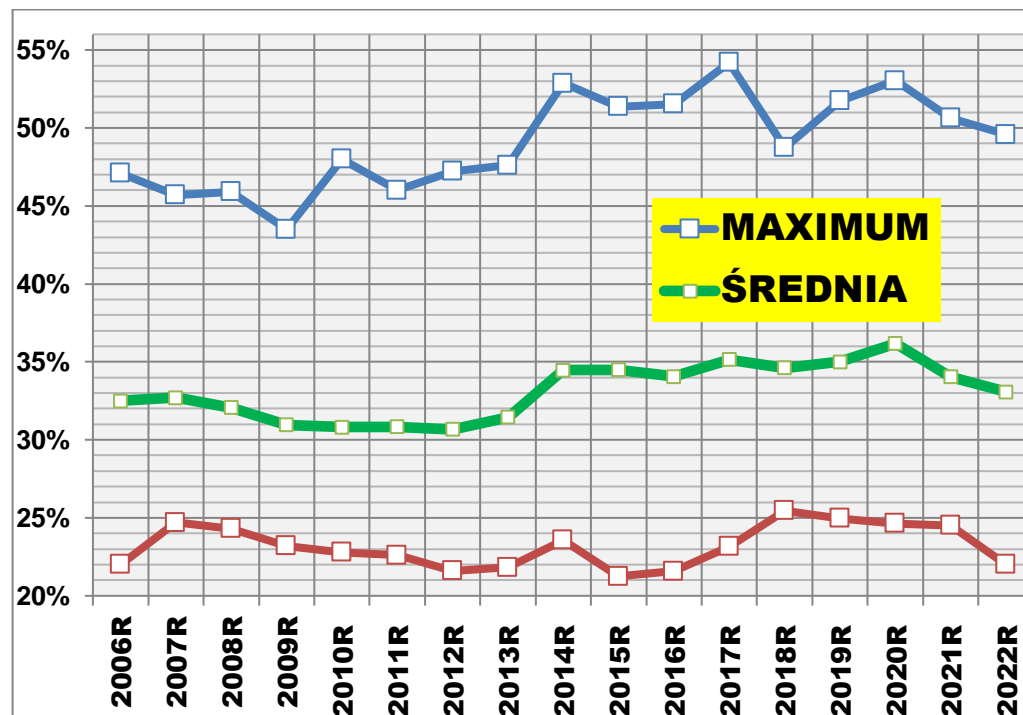
"I Podejście " po szkoleniu podstawowym - P liczba wyników pozytywnych / L liczba egzaminów faktycznie przeprowadzonych.

Uporządkowanie wg. **Pierwsze Podejście 2022**

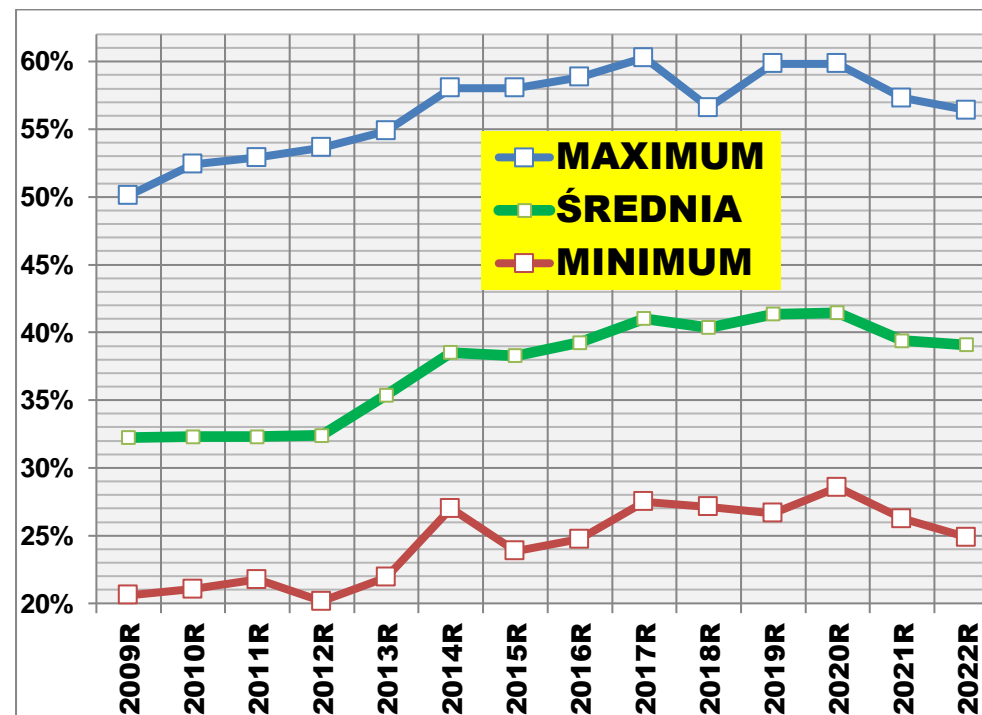
	Global	I podejście	Global	I podejście	Global	I podejście	Global	I podejście	Global	I podejście	Global	I podejście	Global	I podejście	Global	I podejście	Global	I podejście
WORD \ Rok	2017R	2017R	2018R	2018R	2019R	2019R	2020R	2020R	2021R	2021R	2022R	2022R	2023R	2023R	2024R	2024R	2025R	2025R
OSTROŁĘKA	54,19%	60,28%	48,56%	56,59%	51,74%	59,84%	53,03%	59,82%	50,62%	57,30%	49,57%	56,40%						
KALISZ	37,40%	45,15%	40,65%	47,98%	49,43%	55,69%	51,67%	58,48%	49,27%	56,59%	48,11%	54,19%						
ŁOMŻA	46,18%	51,17%	42,18%	46,68%	45,65%	51,63%	46,83%	52,85%	44,64%	51,00%	45,30%	52,33%						
PŁOCK	46,85%	55,34%	45,52%	53,68%	44,98%	53,43%	44,67%	52,50%	42,26%	49,25%	43,26%	51,42%						
LESZNO	37,34%	45,34%	41,09%	50,34%	43,09%	53,00%	45,47%	52,08%	43,25%	50,58%	42,54%	51,10%						
SUWAŁKI	42,03%	50,26%	42,68%	50,37%	44,28%	51,30%	47,33%	54,21%	44,17%	51,62%	43,79%	50,16%						
RZESZÓW	42,43%	50,23%	40,92%	47,71%	39,60%	45,85%	43,03%	49,07%	40,64%	47,90%	41,70%	49,36%						
TARNOBRZEG	39,79%	47,47%	40,96%	48,40%	39,62%	48,53%	39,45%	46,63%	40,40%	46,68%	39,71%	46,39%						
SIEDLCE	41,06%	49,70%	38,41%	47,27%	40,65%	49,56%	43,25%	50,09%	39,18%	45,96%	37,98%	45,12%						
PRZEMYŚL	35,39%	40,88%	35,14%	41,03%	35,18%	40,06%	37,41%	41,59%	41,87%	48,09%	38,96%	43,91%						
LUBLIN	37,82%	43,08%	36,61%	42,48%	36,36%	43,23%	37,68%	43,58%	36,13%	41,05%	37,06%	43,77%						
POZNAŃ	30,43%	33,24%	32,14%	36,78%	32,50%	37,86%	34,81%	39,58%	36,32%	39,94%	37,65%	43,67%						
KROSNO	34,88%	45,19%	31,34%	40,86%	33,75%	45,96%	37,08%	46,05%	33,63%	43,12%	33,61%	43,66%						
JELEŃ Góra	46,91%	52,74%	48,74%	54,72%	47,82%	54,79%	46,86%	54,32%	37,78%	44,57%	35,72%	43,34%						
WŁOCŁAWEK	41,21%	48,31%	38,51%	45,82%	39,70%	47,21%	38,82%	44,45%	35,48%	41,24%	35,45%	42,86%						
KONIN	34,71%	41,45%	34,80%	40,81%	35,13%	42,39%	35,73%	40,96%	34,42%	39,99%	34,16%	42,62%						
PIŁA	27,50%	33,70%	31,83%	40,69%	30,57%	39,64%	29,45%	37,11%	30,57%	38,26%	32,17%	42,46%						
WROCŁAW	39,88%	42,96%	38,37%	41,56%	38,61%	41,00%	41,63%	44,84%	39,43%	42,56%	38,19%	42,13%						
CHEŁM	33,65%	40,35%	32,68%	39,16%	36,09%	43,75%	36,64%	43,85%	35,71%	43,31%	34,59%	42,05%						
CIECHANÓW	35,93%	43,78%	32,63%	40,26%	33,18%	42,39%	34,41%	42,08%	32,18%	40,33%	32,79%	41,19%						
WAŁBRZYCH	33,47%	38,63%	33,23%	37,02%	33,66%	40,29%	41,17%	46,22%	30,98%	35,52%	34,12%	40,90%						
ZAMOŚĆ	33,69%	42,27%	36,99%	44,54%	38,30%	46,67%	36,60%	45,71%	34,20%	43,08%	31,55%	39,70%						
NOWY SĄCZ	35,11%	40,10%	34,50%	38,93%	35,76%	39,99%	39,69%	43,65%	34,95%	39,66%	33,76%	39,05%						
SIERADZ	35,40%	41,87%	33,49%	39,70%	32,14%	38,68%	34,62%	39,24%	32,32%	37,38%	31,68%	38,58%						
TARNÓW	31,66%	40,51%	32,48%	40,82%	33,71%	44,53%	36,80%	42,73%	32,90%	38,48%	32,37%	38,56%						
OLSZTYN	35,69%	41,87%	35,03%	39,57%	34,13%	39,50%	36,14%	41,60%	32,47%	36,87%	33,00%	38,34%						
BIĄŁYSTOK	38,71%	42,60%	32,31%	34,28%	38,16%	40,79%	38,06%	41,61%	34,76%	37,81%	34,79%	38,24%						
SŁUPSK	31,37%	39,40%	30,79%	36,76%	30,50%	37,14%	32,10%	37,75%	30,36%	35,79%	30,62%	37,64%						
TORUŃ	33,56%	40,61%	32,86%	40,34%	32,63%	40,76%	34,75%	42,39%	32,68%	41,20%	29,48%	37,49%						
BYDGOSZCZ	29,83%	36,57%	30,90%	37,66%	30,49%	38,85%	32,00%	39,08%	30,58%	37,86%	29,62%	37,35%						
LEGNICA	32,02%	35,71%	32,06%	36,34%	30,94%	35,20%	33,02%	37,67%	32,08%	37,58%	31,25%	37,04%						
Zielona G.	32,71%	37,88%	35,16%	41,53%	34,90%	40,03%	33,94%	38,44%	33,16%	38,48%	31,23%	36,85%						
KIELCE	33,33%	39,57%	31,88%	36,50%	30,35%	34,92%	32,64%	37,13%	30,92%	36,33%	29,07%	35,09%						
RADOM	34,32%	40,20%	30,43%	35,70%	28,36%	34,24%	30,85%	36,71%	31,39%	36,58%	29,40%	34,81%						
WARSZAWA	34,03%	34,32%	34,53%	35,97%	34,41%	36,09%	31,71%	31,90%	33,55%	34,40%	32,92%	34,79%						
OPOLE	29,19%	32,77%	29,59%	34,32%	28,19%	32,97%	31,72%	35,96%	31,80%	36,01%	29,63%	34,20%						

BIELSKO BIAŁA	32,41%	35,36%	31,44%	33,69%	33,53%	35,87%	36,66%	38,66%	34,77%	37,87%	30,13%	34,02%						
KATOWICE	30,75%	36,11%	30,65%	35,66%	30,50%	36,18%	32,69%	34,60%	31,10%	35,46%	28,77%	33,93%						
GDAŃSK	29,71%	35,94%	29,46%	34,97%	28,96%	34,69%	31,11%	35,42%	29,35%	33,24%	28,12%	33,74%						
CZĘSTOCHOWA	30,72%	36,85%	28,77%	33,92%	29,75%	35,97%	29,12%	33,70%	26,54%	31,32%	27,20%	31,89%						
GORZÓW Wlkp.	30,14%	37,27%	30,06%	33,67%	28,93%	34,40%	28,38%	34,40%	26,89%	31,33%	26,56%	31,53%						
SKIERNIEWICE	35,84%	37,49%	34,47%	36,20%	34,07%	37,84%	33,34%	37,83%	27,92%	30,31%	28,18%	30,97%						
Biała Podlaska	37,04%	44,13%	37,81%	44,70%	35,15%	42,67%	28,39%	31,43%	28,62%	33,16%	25,32%	30,41%						
PIOTRKÓW Tryb.	31,10%	35,92%	29,22%	33,73%	29,56%	33,90%	28,71%	31,55%	26,22%	30,25%	24,17%	29,10%						
ELBLĄG	29,47%	35,19%	29,62%	38,70%	29,95%	39,19%	28,53%	34,33%	24,85%	30,53%	22,62%	28,93%						
KRAKÓW	36,29%	40,41%	34,02%	37,33%	32,32%	36,42%	36,79%	39,95%	30,18%	32,35%	25,48%	28,69%						
ŁÓDŹ	28,04%	30,66%	25,66%	27,12%	24,97%	26,66%	26,79%	29,11%	24,53%	26,24%	22,91%	25,52%						
SZCZECIN	27,90%	31,40%	29,09%	33,75%	27,69%	32,88%	26,44%	29,40%	24,91%	26,83%	22,54%	25,11%						
KOSZALIN	23,16%	27,51%	25,45%	31,44%	25,37%	32,14%	24,64%	28,57%	24,52%	28,95%	22,01%	24,87%						
	2017R		2018R		2019R		2020R		2021R		2022R		2023R		2024R		2025R	
	Global	IP	Global	IP	Global	IP	Global	IP	Global	IP	Global	IP	Global	IP	Global	IP	Global	IP
Maximum	54,19%	60,28%	48,74%	56,59%	51,74%	59,84%	53,03%	59,82%	50,62%	57,30%	49,57%	56,40%						
Minimum	23,16%	27,51%	25,45%	27,12%	24,97%	26,66%	24,64%	28,57%	24,52%	26,24%	22,01%	24,87%						
Średnia	35,15%	41,02%	34,61%	40,37%	35,01%	41,36%	36,18%	41,45%	34,03%	39,39%	33,08%	39,09%						

Egzaminy praktyczne kat. B wariant wszystkie podejścia "Global"



Egzaminy praktyczne kat. B wariant "Pierwsze Podejście"

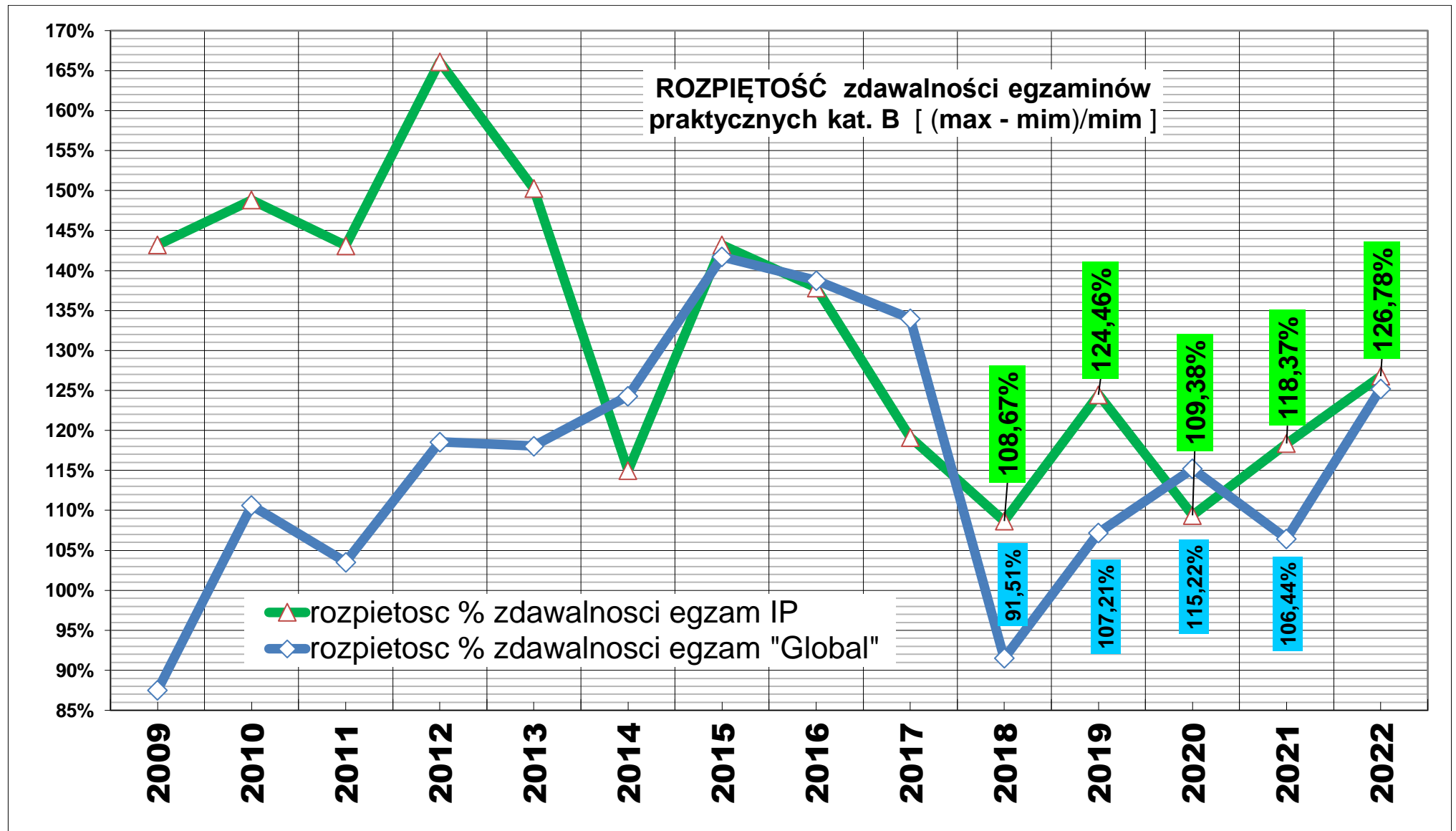


Rozpiętość % wskaźnika średniej zdawalności egzaminów praktycznych kat. B narastająco

Przykładowe wyliczenie wg algorytmu rozpiętości zdawalności egzaminów w 2020 r:

- zdawalność egzaminów pierwszego podejścia [IP] (59,82-28,57) / 28,57 = **109,38%**

- zdawalność wszystkich egzaminów wariant [„Global”] (53,03-24,64) / 24,64 = **115,22%**

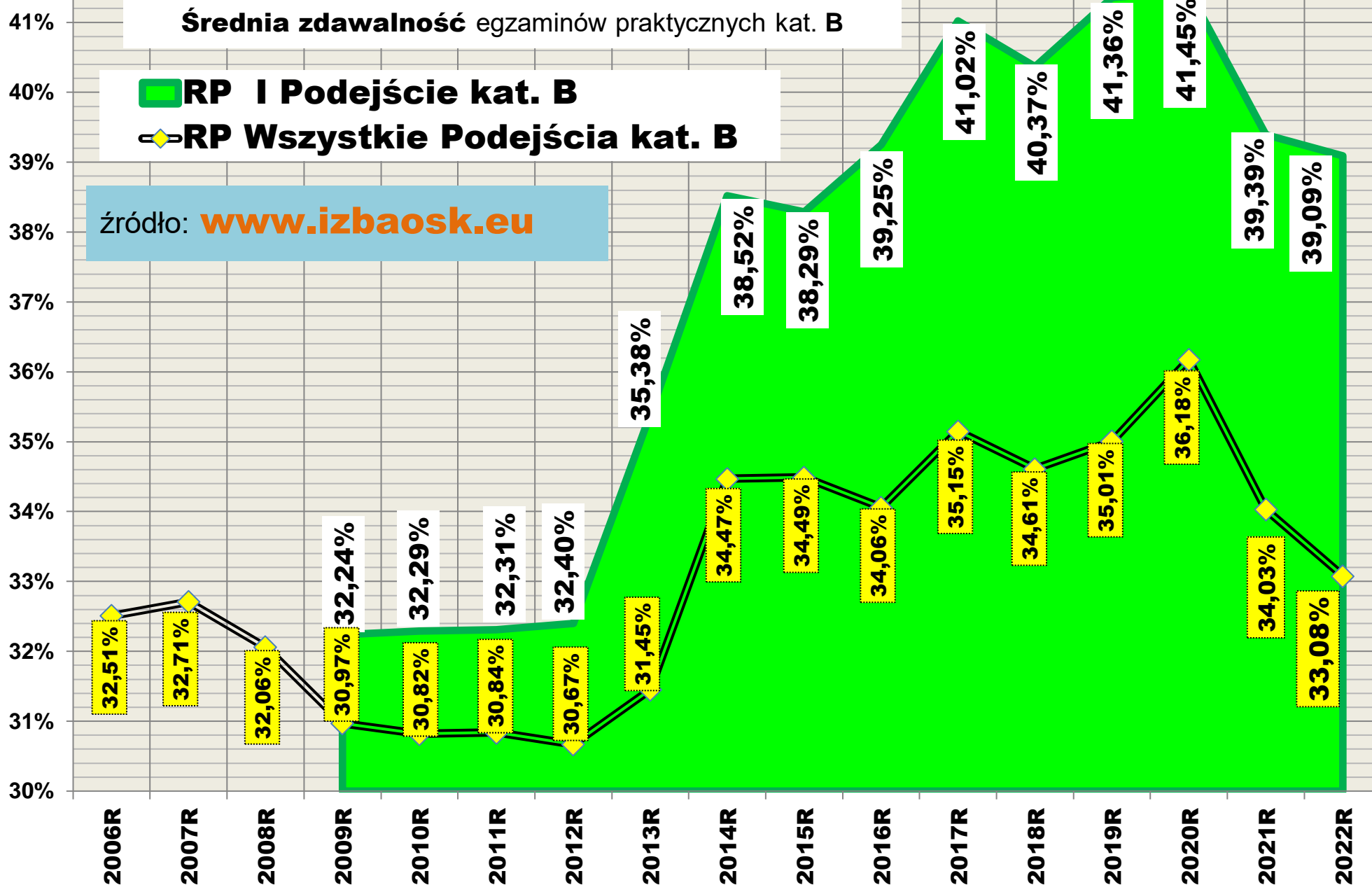


Średnia zdawalność egzaminów praktycznych kat. B

■ RP I Podejście kat. B

◆ RP Wszystkie Podejścia kat. B

źródło: www.izbaosk.eu



Dziesięć WORD-ów z górnej i dolnej "półki" /uporządkowanie wg. "Pierwsze podejście"/

Ranking Word-ów wg. średniej zdawalność egzaminów PRAKTYCZNYCH kat. B Narastająco w okresie 14 lat: 2009 – 2022

uporządkow			
miejsce	WORD	"Global"	Pierwsze podejście
1	OSTROŁĘKA	49,68%	56,36%
2	ŁOMŻA	45,10%	48,37%
3	SUWAŁKI	42,19%	48,05%
4	PŁOCK	40,90%	47,37%
5	RZESZÓW	40,23%	45,47%
6	SIEDLCE	37,72%	43,84%
7	KROSNO	35,45%	43,16%
8	KALISZ	37,77%	43,11%
9	JELEŃ G.	38,24%	42,73%
10	TARNOBRZEG	36,86%	42,73%
11	LESZNO	36,29%	42,51%
12	WŁOCŁAWEK	35,33%	41,14%
13	CIECHANÓW	33,91%	41,06%
14	OLSZTYN	34,93%	39,44%
15	NOWY SĄCZ	36,27%	39,39%
16	PRZEMYŚL	35,17%	38,83%
17	SIERADZ	33,13%	38,56%

miejsce	WORD	"Global"	Pierwsze podejście
18	TARNÓW	32,59%	38,36%
19	RADOM	32,73%	37,99%
20	KONIN	32,90%	37,38%
21	Zielona G.	33,87%	37,34%
22	CHEŁM	32,34%	37,33%
23	Biała Podlaska	33,02%	37,26%
24	TORUŃ	31,85%	37,23%
25	ZAMOŚĆ	31,07%	36,74%
26	LUBLIN	33,22%	36,66%
27	BIAŁYSTOK	34,18%	36,39%
28	LEGNICA	31,83%	36,16%
29	ELBLĄG	29,74%	35,73%
30	POZNAŃ	32,46%	35,60%
31	WROCŁAW	33,38%	34,94%
32	KRAKÓW	33,10%	34,91%
33	KATOWICE	30,67%	34,18%
34	KIELCE	30,57%	34,01%

miejsce	WORD	"Global"	Pierwsze podejście
35	BYDGOSZCZ	29,04%	33,81%
36	GORZÓW Wlkp.	30,19%	33,75%
37	SŁUPSK	29,76%	33,51%
38	BIELSKO BIAŁA	32,65%	33,51%
39	PIOTRKÓW TR	29,72%	33,12%
40	CZĘSTOCHOWA	28,72%	33,05%
41	PIŁA	27,68%	32,64%
42	WAŁBRZYCH	30,16%	32,30%
43	SKIERNIEWICE	30,93%	31,87%
44	OPOLE	29,00%	31,68%
45	WARSZAWA	31,47%	31,12%
46	GDAŃSK	27,42%	30,48%
47	SZCZECIN	26,15%	28,09%
48	KOSZALIN	23,90%	27,06%
49	ŁÓDŹ	24,71%	25,39%
	Średnia	33,27%	37,38%
	MAX	49,68%	56,36%
	MIM	23,90%	25,39%

legenda:

"Global" wszystkie podejścia [P/L]

- P liczba wyników pozytywnych / L liczba egzaminów faktycznie przeprowadzonych (kol.10 – kol.19),

"I podejście" po szkoleniu podstawowym w OSK - P liczba wyników pozytywnych / L liczba egzaminów faktycznie przeprowadzonych.

kopiowanie, przetwarzanie, publikowanie bez zgody **zabronione!**

2 maja 2023

opracował: **Roman Stencel**

<http://dane.izbaosk.eu/images/WykresRanking10WordowNarastajPraktyka,B2021.jpg>

<http://dane.izbaosk.eu/dokumenty/ZdawalnoscEgzaminPraktycznyKatB2006-2021.pdf>