

Zdawalność egzaminów praktycznych kat. B prawa jazdy / na podstawie danych pozyskanych z 49 WORD-ów (Wojewódzki Ośrodek Ruchu Drogowego)

uporządkowanie wg. **Global 2017**

	Global	Global	Global	Global	I podejście	Global	I podejście	Global	I podejście	Global	I podejście	Global	I podejście	Global	I podejście	Global	I podejście	Global	I podejście	Global	I podejście
WORD \ Rok	2006R	2007R	2008R	2009R	2009R	2010R	2010R	2011R	2011R	2012R	2012R	2013R	2013R	2014R	2014R	2015R	2015R	2016R	2016R	2017R	2017R
OSTROŁĘKA	47,10%	44,30%	45,90%	43,20%	50,10%	48,00%	52,40%	46,00%	52,90%	47,21%	53,65%	47,60%	54,88%	52,87%	58,04%	51,36%	58,03%	51,52%	58,84%	54,19%	60,28%
JELEŃ G.	30,60%	26,60%	27,30%	26,00%	27,30%	27,80%	29,30%	29,40%	31,40%	29,30%	30,50%	32,17%	32,83%	38,09%	43,33%	43,46%	47,44%	45,33%	51,67%	46,91%	52,74%
PŁOCK	37,70%	35,20%	31,30%	31,00%	34,50%	34,20%	37,50%	35,40%	39,70%	36,70%	40,10%	38,62%	47,55%	43,91%	50,15%	41,59%	47,68%	43,60%	50,34%	46,85%	55,34%
ŁOMŻA	41,70%	41,80%	42,90%	43,50%	43,20%	43,70%	43,30%	42,80%	41,80%	42,30%	41,00%	46,10%	47,20%	49,45%	53,23%	46,60%	50,54%	46,18%	51,19%	46,18%	51,17%
RZESZÓW	31,50%	34,80%	33,60%	35,80%	37,70%	36,90%	40,10%	39,10%	41,70%	38,70%	41,30%	36,43%	43,58%	44,54%	49,59%	41,91%	45,90%	41,50%	46,62%	42,43%	50,23%
SUWAŁKI	35,60%	32,60%	36,70%	38,60%	40,70%	39,40%	43,00%	39,90%	43,20%	39,00%	43,50%	41,60%	48,20%	44,77%	50,48%	43,21%	47,96%	39,89%	47,76%	42,03%	50,26%
WŁOCŁAWEK	30,90%	30,90%	28,60%	27,20%	28,20%	24,60%	26,70%	27,40%	31,20%	31,60%	35,80%	33,43%	41,24%	39,49%	46,03%	40,91%	47,78%	40,87%	49,18%	41,21%	48,31%
SIEDLCE	32,20%	31,30%	32,80%	32,10%	34,40%	34,10%	36,80%	34,30%	37,20%	34,00%	37,90%	35,20%	41,92%	38,43%	44,95%	40,37%	45,88%	38,98%	47,04%	41,06%	49,70%
WROCŁAW	30,90%	31,60%	29,90%	28,90%	28,30%	25,10%	25,50%	24,30%	22,60%	27,20%	26,50%	29,97%	30,20%	30,51%	32,09%	29,46%	30,78%	35,78%	38,19%	39,88%	42,96%
TARNOBRZEG	30,50%	32,30%	30,60%	28,50%	30,40%	31,20%	33,00%	30,60%	32,60%	31,70%	35,00%	33,89%	40,86%	41,02%	48,75%	39,90%	46,40%	39,25%	47,06%	39,79%	47,47%
BIAŁYSTOK	30,90%	30,30%	33,70%	31,80%	33,20%	31,60%	30,80%	30,70%	29,40%	26,90%	26,40%	28,28%	31,30%	34,68%	37,07%	38,00%	41,82%	39,79%	44,13%	38,71%	42,60%
LUBLIN	28,30%	28,90%	27,80%	26,70%	26,20%	28,10%	29,10%	29,60%	29,90%	29,40%	29,70%	30,49%	32,67%	31,83%	33,67%	32,68%	35,69%	34,66%	39,09%	37,82%	43,08%
KALISZ	31,90%	36,20%	35,60%	32,20%	36,60%	31,20%	35,80%	31,00%	35,00%	29,70%	32,70%	30,25%	33,96%	31,90%	35,67%	32,19%	35,82%	33,80%	39,84%	37,40%	45,15%
LESZNO	26,50%	30,80%	30,90%	28,10%	30,90%	33,90%	39,90%	31,70%	36,30%	29,30%	33,20%	30,26%	34,84%	34,25%	37,96%	33,85%	39,34%	33,94%	40,24%	37,34%	45,34%
Biała Podlaska	30,70%	31,00%	29,20%	28,20%	28,10%	27,90%	27,50%	31,60%	33,20%	32,10%	34,60%	31,77%	38,00%	40,66%	45,01%	39,64%	44,27%	38,02%	44,45%	37,04%	44,13%
KRAKÓW	32,60%	29,80%	29,20%	31,60%	32,20%	30,50%	31,00%	29,13%	28,84%	30,17%	28,82%	30,71%	32,93%	34,61%	37,23%	43,27%	40,29%	38,30%	42,31%	36,29%	40,41%
CIECHANÓW	32,40%	31,10%	30,80%	31,10%	35,70%	35,70%	40,30%	35,10%	41,80%	30,20%	36,50%	32,32%	40,55%	39,77%	46,90%	36,40%	43,05%	33,09%	40,07%	35,93%	43,78%
SKIERNIEWICE	26,20%	31,00%	30,00%	31,30%	31,10%	29,00%	28,00%	27,70%	25,10%	26,70%	25,30%	28,30%	29,47%	30,40%	28,93%	33,87%	33,49%	31,86%	34,09%	35,84%	37,49%
OLSZTYN	32,40%	35,30%	36,00%	35,40%	38,10%	36,80%	40,10%	36,80%	39,60%	34,50%	38,90%	36,32%	40,68%	33,27%	38,68%	34,63%	38,17%	34,84%	40,18%	35,69%	41,87%
SIERADZ	36,90%	36,50%	34,90%	33,90%	37,80%	33,90%	38,80%	32,40%	36,50%	31,00%	35,00%	31,64%	37,81%	35,19%	40,80%	32,97%	37,98%	33,10%	39,67%	35,40%	41,87%
PRZEMYŚL	37,70%	31,10%	27,70%	27,50%	27,30%	30,80%	31,40%	34,00%	35,20%	34,20%	36,60%	32,52%	36,68%	37,76%	41,23%	38,29%	41,83%	33,34%	37,80%	35,39%	40,88%
NOWY SĄCZ	38,50%	38,10%	39,00%	38,40%	41,00%	40,30%	41,80%	39,80%	39,80%	36,89%	38,33%	34,43%	38,11%	33,07%	33,97%	34,91%	36,85%	36,23%	40,25%	35,11%	40,10%
KROSNO	43,80%	45,70%	43,90%	38,40%	43,80%	35,90%	38,70%	36,90%	41,00%	33,80%	38,10%	32,51%	38,30%	38,56%	46,57%	38,83%	47,26%	37,07%	45,62%	34,88%	45,19%
KONIN	32,70%	33,30%	33,40%	32,10%	32,60%	29,80%	30,90%	30,60%	31,00%	30,10%	31,50%	30,87%	33,67%	31,18%	36,11%	32,85%	38,22%	34,19%	41,09%	34,71%	41,45%
RADOM	33,50%	31,40%	36,10%	32,40%	36,20%	32,10%	35,90%	32,70%	36,70%	33,60%	37,70%	33,17%	40,61%	37,34%	42,85%	36,80%	41,90%	35,34%	41,77%	34,32%	40,20%
WARSZAWA	29,30%	28,90%	30,00%	27,30%	24,30%	25,50%	22,20%	28,00%	24,90%	29,00%	26,00%	31,40%	30,60%	32,46%	32,22%	33,12%	34,15%	32,63%	33,89%	34,03%	34,32%
ZAMOŚĆ	30,30%	31,30%	29,20%	26,00%	27,20%	24,30%	24,20%	24,50%	25,90%	27,70%	30,00%	28,70%	35,28%	30,93%	35,37%	31,59%	36,79%	29,92%	37,64%	33,69%	42,27%
CHEŁM	27,60%	26,80%	29,20%	29,70%	31,60%	29,80%	31,70%	28,10%	29,40%	29,00%	31,90%	29,53%	34,28%	32,64%	36,83%	31,91%	35,61%	32,72%	38,83%	33,65%	40,35%
TORUŃ	38,90%	39,30%	34,80%	31,10%	32,90%	29,10%	31,80%	28,90%	30,20%	29,00%	30,60%	30,78%	36,21%	33,28%	38,22%	33,37%	37,33%	34,43%	41,18%	33,56%	40,61%
WAŁBRZYCH	22,90%	28,90%	24,80%	23,70%	20,60%	26,07%	25,72%	24,19%	22,15%	26,78%	26,06%	25,74%	24,25%	28,09%	28,28%	31,05%	32,41%	30,00%	34,09%	33,47%	38,63%
KIELCE	27,20%	27,00%	30,60%	29,90%	28,30%	28,40%	28,60%	28,60%	30,20%	29,10%	30,70%	29,10%	31,12%	31,64%	34,91%	31,46%	36,13%	31,57%	36,66%	33,33%	39,57%
Zielona G.	26,70%	30,50%	30,60%	30,20%	30,50%	31,60%	32,30%	33,70%	35,30%	34,80%	35,00%	36,06%	39,35%	37,64%	40,59%	35,68%	37,87%	32,31%	36,94%	32,71%	37,88%
BIELSKO BIAŁA	32,10%	32,80%	34,60%	31,70%	29,20%	32,50%	30,80%	32,30%	30,20%	30,20%	28,90%	31,21%	30,89%	33,86%	34,84%	34,38%	35,90%	32,02%	32,87%	32,41%	35,36%

LEGNICA	30,30%	26,90%	29,80%	30,40%	30,90%	31,00%	32,90%	31,00%	33,20%	32,80%	36,00%	32,59%	38,23%	35,34%	41,52%	33,75%	38,26%	30,88%	35,68%	32,02%	35,71%
TARNÓW	26,40%	28,50%	31,90%	32,40%	34,80%	29,10%	31,10%	29,90%	32,70%	31,50%	35,70%	33,42%	38,78%	35,48%	40,92%	33,75%	39,68%	31,98%	39,45%	31,66%	40,51%
SŁUPSK	29,50%	29,00%	29,70%	28,70%	26,50%	27,90%	26,30%	27,40%	27,20%	26,60%	26,50%	28,22%	32,38%	32,70%	37,37%	29,42%	33,45%	29,92%	35,00%	31,37%	39,40%
PIOTRKÓW TR	32,90%	36,50%	32,90%	31,50%	34,30%	30,40%	31,90%	29,70%	29,80%	29,40%	30,80%	31,80%	37,10%	33,50%	38,89%	31,44%	34,23%	29,31%	32,27%	31,10%	35,92%
KATOWICE	30,60%	35,20%	31,30%	35,60%	35,50%	31,40%	33,20%	30,50%	32,70%	30,10%	32,50%	27,74%	31,79%	28,50%	31,65%	30,36%	34,02%	30,71%	35,16%	30,75%	36,11%
CZĘSTOCHOWA	37,90%	35,80%	33,70%	31,70%	33,80%	28,70%	30,90%	28,20%	31,00%	25,70%	28,90%	27,94%	32,76%	30,00%	34,65%	27,52%	31,14%	30,17%	35,96%	30,72%	36,85%
POZNAŃ	41,90%	42,50%	37,70%	35,90%	39,20%	31,30%	33,60%	32,20%	33,40%	30,00%	30,70%	31,00%	31,31%	30,50%	33,72%	30,50%	33,18%	29,22%	32,18%	30,43%	33,24%
GORZÓW Wlkp.	35,20%	34,70%	32,50%	31,00%	31,80%	29,10%	28,40%	32,00%	32,90%	32,50%	33,50%	28,52%	33,73%	33,34%	36,83%	33,31%	36,12%	31,88%	36,56%	30,14%	37,27%
BYDGOSZCZ	33,95%	30,70%	28,00%	30,20%	30,60%	27,60%	30,00%	25,80%	26,30%	26,30%	25,80%	25,28%	29,06%	28,96%	33,72%	30,16%	36,64%	28,85%	33,85%	29,83%	36,57%
GDAŃSK	29,05%	29,32%	31,53%	25,49%	25,10%	23,90%	24,25%	23,70%	23,30%	22,20%	21,20%	26,77%	27,81%	27,57%	31,01%	29,43%	34,15%	28,04%	31,84%	29,71%	35,94%
ELBLĄG	27,90%	29,80%	28,20%	27,20%	30,20%	28,40%	31,60%	30,10%	33,90%	32,20%	36,10%	35,22%	40,83%	35,53%	43,81%	32,05%	38,62%	30,63%	38,26%	29,47%	35,19%
OPOLE	35,80%	32,70%	28,40%	28,90%	29,50%	29,10%	29,80%	27,40%	27,30%	28,80%	28,80%	26,88%	30,41%	26,67%	28,66%	27,58%	28,57%	30,54%	34,25%	29,19%	32,77%
ŁÓDŹ	22,00%	24,70%	24,30%	23,20%	21,26%	22,79%	21,06%	22,60%	21,76%	21,60%	20,16%	22,12%	21,93%	28,16%	29,66%	26,24%	26,41%	26,33%	27,93%	28,04%	30,66%
SZCZECIN	35,60%	37,10%	31,60%	27,10%	28,20%	27,60%	28,00%	24,10%	24,10%	23,00%	21,70%	25,06%	25,03%	25,39%	27,16%	27,77%	29,77%	27,45%	29,99%	27,90%	31,40%
PIŁA	36,10%	34,30%	32,30%	29,00%	31,60%	24,80%	25,20%	24,50%	25,60%	24,70%	26,50%	25,30%	28,70%	26,70%	30,47%	25,09%	27,51%	25,27%	29,46%	27,50%	33,70%
KOSZALIN	29,10%	27,90%	25,60%	25,70%	26,10%	27,10%	29,30%	25,00%	25,90%	23,40%	24,80%	21,83%	23,71%	23,57%	27,00%	21,25%	23,86%	21,58%	24,74%	23,16%	27,51%
	2006R	2007R	2008R	2009R	2009R	2010R	2010R	2011R	2011R	2012R	2012R	2013R	2013R	2014R	2014R	2015R	2015R	2016R	2016R	2017R	2017R
	Global	Global	Global	Global	IP	Global	IP	Global	IP	Global	IP	Global	IP	Global	IP	Global	IP	Global	IP	Global	IP
MAXIMUM	47,10%	45,70%	45,90%	43,50%	50,10%	48,00%	52,40%	46,00%	52,90%	47,21%	53,65%	47,60%	54,88%	52,87%	58,04%	51,36%	58,03%	51,52%	58,84%	54,19%	60,28%
MINIMUM	22,00%	24,70%	24,30%	23,20%	20,60%	22,79%	21,06%	22,60%	21,76%	21,60%	20,16%	21,83%	21,93%	23,57%	27,00%	21,25%	23,86%	21,58%	24,74%	23,16%	27,51%
ŚREDNIA	32,51%	32,71%	32,06%	30,97%	32,24%	30,82%	32,29%	30,84%	32,31%	30,67%	32,40%	31,45%	35,38%	34,49%	38,52%	34,49%	38,29%	34,06%	39,25%	35,15%	41,02%

legenda:

"global" [P/L]

- P liczba wyników pozytywnych / L liczba egzaminów faktycznie przeprowadzonych (kol.10 – kol.19),

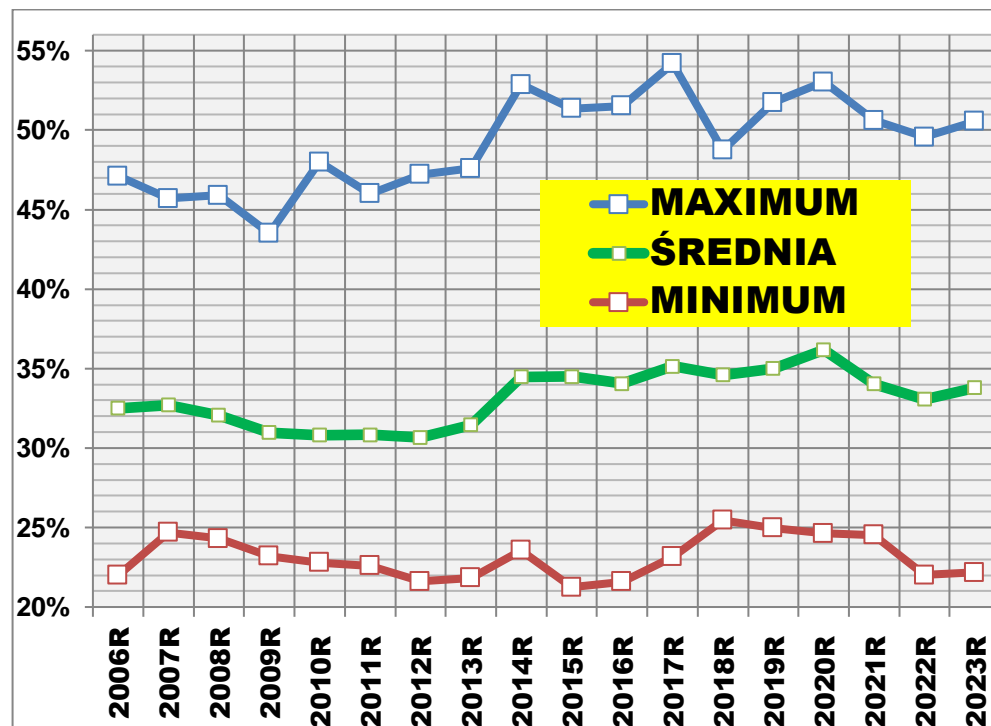
"I Podejście " po szkoleniu podstawowym - P liczba wyników pozytywnych / L liczba egzaminów faktycznie przeprowadzonych.

Uporządkowanie wg. **Pierwsze Podejście 2023**

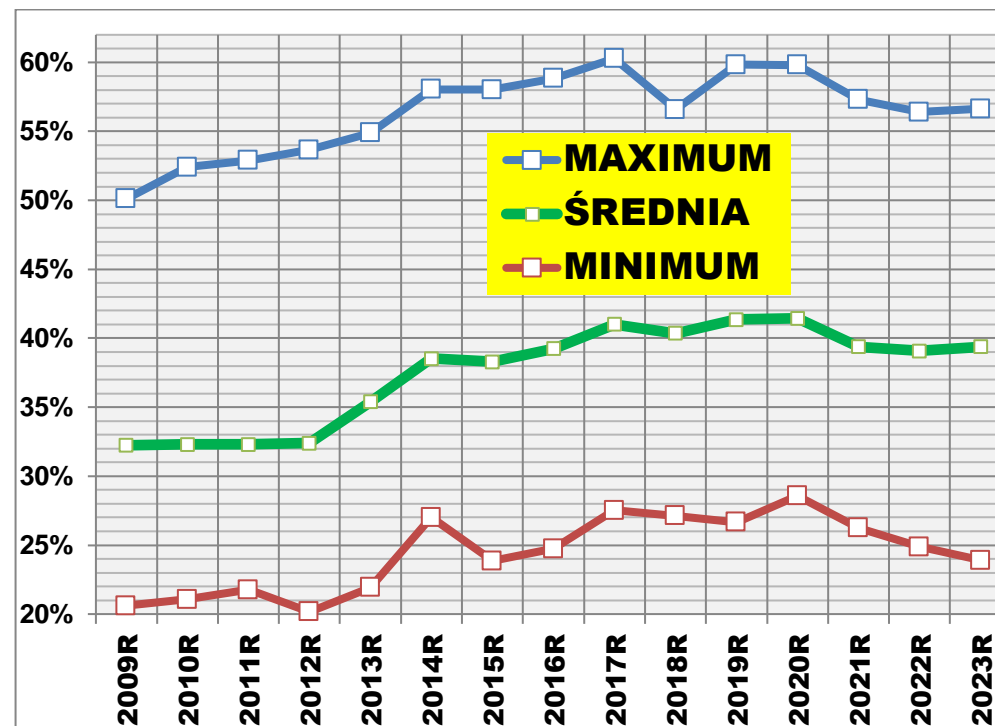
	Global	I podejście	Global	I podejście	Global	I podejście	Global	I podejście	Global	I podejście	Global	I podejście	Global	I podejście	Global	I podejście	Global	I podejście
WORD \ Rok	2017R	2017R	2018R	2018R	2019R	2019R	2020R	2020R	2021R	2021R	2022R	2022R	2023R	2023R	2024R	2024R	2025R	2025R
OSTROŁĘKA	54,19%	60,28%	48,56%	56,59%	51,74%	59,84%	53,03%	59,82%	50,62%	57,30%	49,57%	56,40%	50,56%	56,62%				
KALISZ	37,40%	45,15%	40,65%	47,98%	49,43%	55,69%	51,67%	58,48%	49,27%	56,59%	48,11%	54,19%	49,12%	55,25%				
ŁOMŻA	46,18%	51,17%	42,18%	46,68%	45,65%	51,63%	46,83%	52,85%	44,64%	51,00%	45,30%	52,33%	47,20%	53,76%				
RZESZÓW	42,43%	50,23%	40,92%	47,71%	39,60%	45,85%	43,03%	49,07%	40,64%	47,90%	41,70%	49,36%	44,14%	51,58%				
LESZNO	37,34%	45,34%	41,09%	50,34%	43,09%	53,00%	45,47%	52,08%	43,25%	50,58%	42,54%	51,10%	43,61%	51,13%				
PŁOCK	46,85%	55,34%	45,52%	53,68%	44,98%	53,43%	44,67%	52,50%	42,26%	49,25%	43,26%	51,42%	43,34%	51,02%				
SUWAŁKI	42,03%	50,26%	42,68%	50,37%	44,28%	51,30%	47,33%	54,21%	44,17%	51,62%	43,79%	50,16%	45,80%	49,96%				
SIEDLCE	41,06%	49,70%	38,41%	47,27%	40,65%	49,56%	43,25%	50,09%	39,18%	45,96%	37,98%	45,12%	40,94%	48,99%				
LUBLIN	37,82%	43,08%	36,61%	42,48%	36,36%	43,23%	37,68%	43,58%	36,13%	41,05%	37,06%	43,77%	40,20%	46,73%				
TARNOBRZEG	39,79%	47,47%	40,96%	48,40%	39,62%	48,53%	39,45%	46,63%	40,40%	46,68%	39,71%	46,39%	39,07%	45,12%				
POZNAŃ	30,43%	33,24%	32,14%	36,78%	32,50%	37,86%	34,81%	39,58%	36,32%	39,94%	37,65%	43,67%	39,64%	44,57%				
WAŁBRZYCH	33,47%	38,63%	33,23%	37,02%	33,66%	40,29%	41,17%	46,22%	30,98%	35,52%	34,12%	40,90%	37,50%	44,56%				
WŁOCŁAWEK	41,21%	48,31%	38,51%	45,82%	39,70%	47,21%	38,82%	44,45%	35,48%	41,24%	35,45%	42,86%	36,66%	44,46%				
JELEŃ G.	46,91%	52,74%	48,74%	54,72%	47,82%	54,79%	46,86%	54,32%	37,78%	44,57%	35,72%	43,34%	37,18%	43,08%				
BIAŁYSTOK	38,71%	42,60%	32,31%	34,28%	38,16%	40,79%	38,06%	41,61%	34,76%	37,81%	34,79%	38,24%	37,95%	42,88%				
PRZEMYŚL	35,39%	40,88%	35,14%	41,03%	35,18%	40,06%	37,41%	41,59%	41,87%	48,09%	38,96%	43,91%	38,79%	42,26%				
KROSNO	34,88%	45,19%	31,34%	40,86%	33,75%	45,96%	37,08%	46,05%	33,63%	43,12%	33,61%	43,66%	32,57%	41,80%				
WROCŁAW	39,88%	42,96%	38,37%	41,56%	38,61%	41,00%	41,63%	44,84%	39,43%	42,56%	38,19%	42,13%	38,14%	41,70%				
TARNÓW	31,66%	40,51%	32,48%	40,82%	33,71%	44,53%	36,80%	42,73%	32,90%	38,48%	31,23%	36,85%	33,55%	41,26%				
KONIN	34,71%	41,45%	34,80%	40,81%	35,13%	42,39%	35,73%	40,96%	34,42%	39,99%	34,16%	42,62%	33,52%	40,54%				
NOWY SĄCZ	35,11%	40,10%	34,50%	38,93%	35,76%	39,99%	39,69%	43,65%	34,95%	39,66%	33,76%	39,05%	35,99%	40,52%				
CHEŁM	33,65%	40,35%	32,68%	39,16%	36,09%	43,75%	36,64%	43,85%	35,71%	43,31%	34,59%	42,05%	33,65%	40,06%				
PIŁA	27,50%	33,70%	31,83%	40,69%	30,57%	39,64%	29,45%	37,11%	30,57%	38,26%	32,17%	42,46%	32,78%	39,73%				
KIELCE	33,33%	39,57%	31,88%	36,50%	30,35%	34,92%	32,64%	37,13%	30,92%	36,33%	29,07%	35,09%	32,23%	38,81%				
Zielona G.	32,71%	37,88%	35,16%	41,53%	34,90%	40,03%	33,94%	38,44%	33,16%	38,48%	32,37%	38,56%	31,56%	38,65%				
LEGNICA	32,02%	35,71%	32,06%	36,34%	30,94%	35,20%	33,02%	37,67%	32,08%	37,58%	31,25%	37,04%	31,81%	38,13%				
ZAMOŚĆ	33,69%	42,27%	36,99%	44,54%	38,30%	46,67%	36,60%	45,71%	34,20%	43,08%	31,55%	39,70%	31,49%	38,00%				
OPOLE	29,19%	32,77%	29,59%	34,32%	28,19%	32,97%	31,72%	35,96%	31,80%	36,01%	29,63%	34,20%	31,59%	37,32%				
CIECHANÓW	35,93%	43,78%	32,63%	40,26%	33,18%	42,39%	34,41%	42,08%	32,18%	40,33%	32,79%	41,19%	31,01%	36,74%				
SIERADZ	35,40%	41,87%	33,49%	39,70%	32,14%	38,68%	34,62%	39,24%	32,32%	37,38%	31,68%	38,58%	30,95%	36,43%				
BIELSKO BIAŁA	32,41%	35,36%	31,44%	33,69%	33,53%	35,87%	36,66%	38,66%	34,77%	37,87%	30,13%	34,02%	31,35%	36,07%				
OLSZTYN	35,69%	41,87%	35,03%	39,57%	34,13%	39,50%	36,14%	41,60%	32,47%	36,87%	33,00%	38,34%	31,76%	35,74%				
SŁUPSK	31,37%	39,40%	30,79%	36,76%	30,50%	37,14%	32,10%	37,75%	30,36%	35,79%	30,62%	37,64%	28,75%	35,00%				
TORUŃ	33,56%	40,61%	32,86%	40,34%	32,63%	40,76%	34,75%	42,39%	32,68%	41,20%	29,48%	37,49%	28,30%	34,89%				
WARSZAWA	34,03%	34,32%	34,53%	35,97%	34,41%	36,09%	31,71%	31,90%	33,55%	34,40%	32,92%	34,79%	33,06%	34,88%				
CZĘSTOCHOWA	30,72%	36,85%	28,77%	33,92%	29,75%	35,97%	29,12%	33,70%	26,54%	31,32%	27,20%	31,89%	29,62%	34,85%				

GORZÓW Wlkp.	30,14%	37,27%	30,06%	33,67%	28,93%	34,40%	28,38%	34,40%	26,89%	31,33%	26,56%	31,53%	28,35%	34,32%				
GDAŃSK	29,71%	35,94%	29,46%	34,97%	28,96%	34,69%	31,11%	35,42%	29,35%	33,24%	28,12%	33,74%	28,32%	33,79%				
KATOWICE	30,75%	36,11%	30,65%	35,66%	30,50%	36,18%	32,69%	34,60%	31,10%	35,46%	28,77%	33,93%	29,50%	33,77%				
RADOM	34,32%	40,20%	30,43%	35,70%	28,36%	34,24%	30,85%	36,71%	31,39%	36,58%	29,40%	34,81%	29,52%	33,54%				
SKIERNIEWICE	35,84%	37,49%	34,47%	36,20%	34,07%	37,84%	33,34%	37,83%	27,92%	30,31%	28,18%	30,97%	29,55%	33,12%				
BYDGOSZCZ	29,83%	36,57%	30,90%	37,66%	30,49%	38,85%	32,00%	39,08%	30,58%	37,86%	29,62%	37,35%	26,02%	32,34%				
KRAKÓW	36,29%	40,41%	34,02%	37,33%	32,32%	36,42%	36,79%	39,95%	30,18%	32,35%	25,48%	28,69%	26,62%	30,33%				
KOSZALIN	23,16%	27,51%	25,45%	31,44%	25,37%	32,14%	24,64%	28,57%	24,52%	28,95%	22,01%	24,87%	24,98%	29,72%				
ELBLĄG	29,47%	35,19%	29,62%	38,70%	29,95%	39,19%	28,53%	34,33%	24,85%	30,53%	22,62%	28,93%	24,36%	29,66%				
Biała Podlaska	37,04%	44,13%	37,81%	44,70%	35,15%	42,67%	28,39%	31,43%	28,62%	33,16%	25,32%	30,41%	25,21%	28,82%				
PIOTRKÓW TR	31,10%	35,92%	29,22%	33,73%	29,56%	33,90%	28,71%	31,55%	26,22%	30,25%	24,17%	29,10%	23,58%	28,64%				
SZCZECIN	27,90%	31,40%	29,09%	33,75%	27,69%	32,88%	26,44%	29,40%	24,91%	26,83%	22,54%	25,11%	22,77%	25,09%				
ŁÓDŹ	28,04%	30,66%	25,66%	27,12%	24,97%	26,66%	26,79%	29,11%	24,53%	26,24%	22,91%	25,52%	22,17%	23,91%				
	2017R		2018R		2019R		2020R		2021R		2022R		2023R		2024R		2025R	
	Global	IP	Global	IP	Global	IP	Global	IP	Global	IP	Global	IP	Global	IP	Global	IP	Global	IP
Maximum	54,19%	60,28%	48,74%	56,59%	51,74%	59,84%	53,03%	59,82%	50,62%	57,30%	49,57%	56,40%	50,56%	56,62%				
Minimum	23,16%	27,51%	25,45%	27,12%	24,97%	26,66%	24,64%	28,57%	24,52%	26,24%	22,01%	24,87%	22,17%	23,91%				
Średnia	35,15%	41,02%	34,61%	40,37%	35,01%	41,36%	36,18%	41,45%	34,03%	39,39%	33,08%	39,09%	33,80%	39,39%				

Egzaminy praktyczne kat. B wariant wszystkie podejścia "Global"



Egzaminy praktyczne kat. B wariant "Pierwsze Podejście"

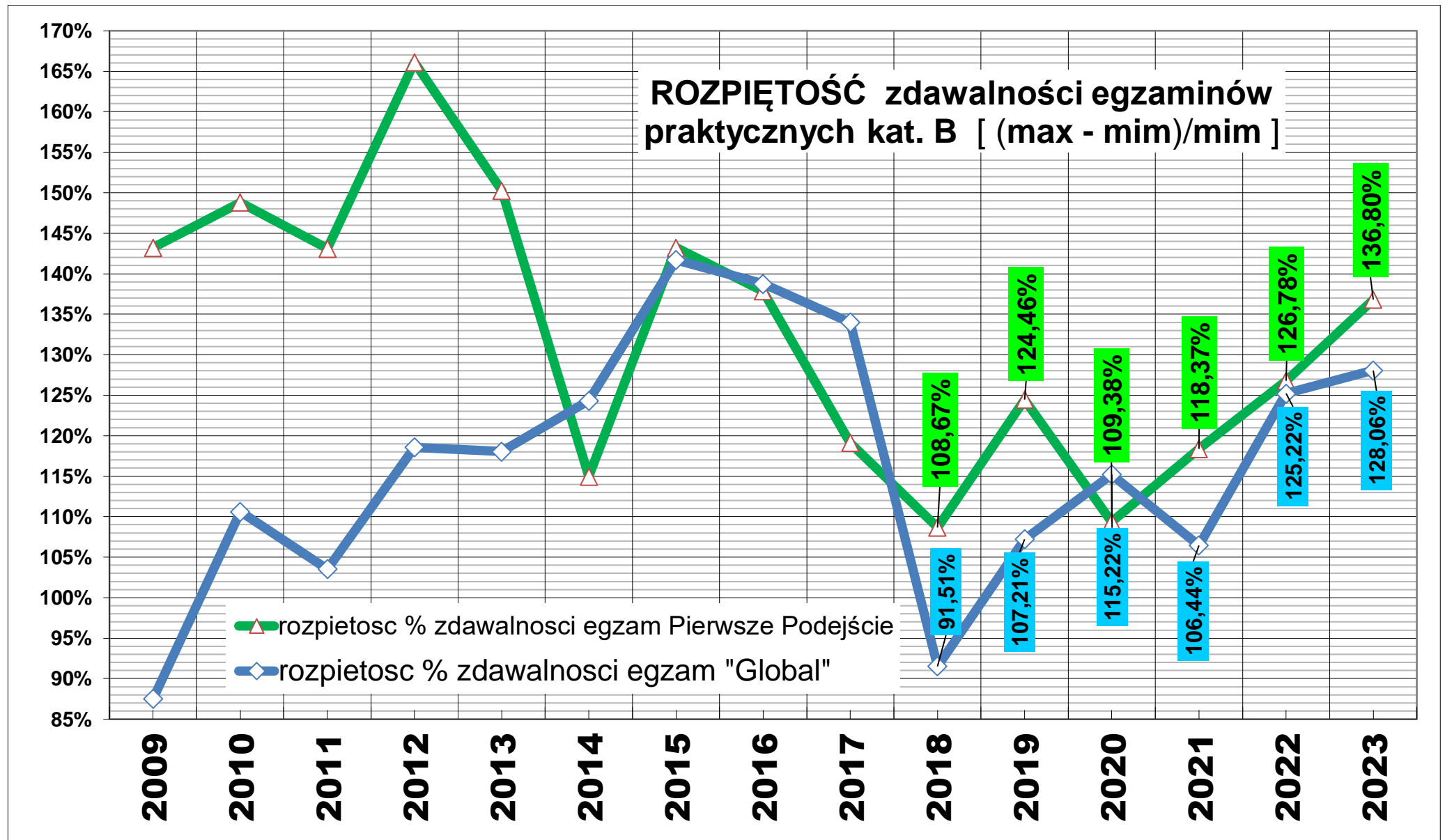


Rozpiętość % wskaźnika średniej zdawalności egzaminów praktycznych kat. B narastająco

Przykładowe wyliczenie wg algorytmu rozpiętości zdawalności egzaminów w 2020 r:

- zdawalność egzaminów pierwszego podejścia [IP] (59,82-28,57) / 28,57 = **109,38%**

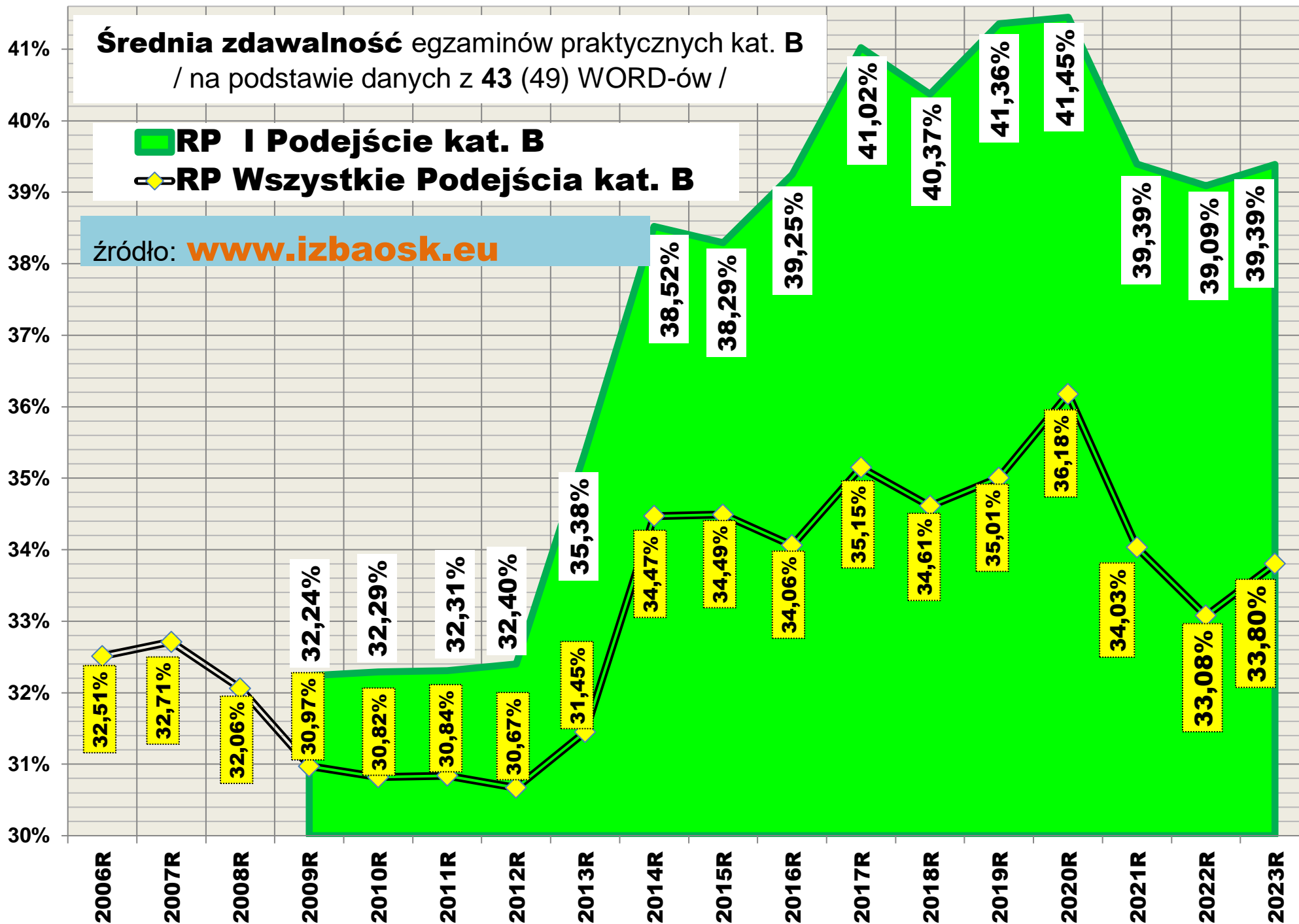
- zdawalność wszystkich egzaminów wariant [„Global”] (53,03-24,64) / 24,64 = **115,22%**



Średnia zdawalność egzaminów praktycznych kat. B / na podstawie danych z 43 (49) WORD-ów /

■ RP I Podejście kat. B
◆ RP Wszystkie Podejścia kat. B

źródło: www.izbaosk.eu



Dziesięć WORD-ów z górnej i dolnej "półki" /uporządkowanie wg. "Pierwsze podejście"/

Ranking Word-ów wg. średniej zdawalność egzaminów **PRAKTYCZNYCH** kat. **B Narastająco** w okresie **15 lat: 2009 – 2023**

		Global	I podejście
	WORD	2009-2023	uporządk
1	OSTROŁĘKA	49,74%	56,38%
2	ŁOMŻA	45,24%	48,73%
3	SUWAŁKI	42,43%	48,18%
4	PŁOCK	41,06%	47,61%
5	RZESZÓW	40,49%	45,88%
6	SIEDLCE	37,93%	44,19%
7	KALISZ	38,53%	43,91%
8	LESZNO	36,78%	43,08%
9	KROSNO	35,26%	43,07%
10	TARNOBRZEG	37,00%	42,89%
11	JELEŃ G.	38,17%	42,76%
12	WŁOCŁAWEK	35,42%	41,37%
13	CIECHANÓW	33,72%	40,78%
14	NOWY SĄCZ	36,25%	39,47%
15	OLSZTYN	34,72%	39,19%
16	PRZEMYŚL	35,41%	39,06%
17	TARNÓW	32,66%	38,55%

18	SIERADZ	32,98%	38,42%
19	RADOM	32,51%	37,69%
20	KONIN	32,94%	37,59%
21	CHEŁM	32,43%	37,51%
22	Zielona G.	33,72%	37,43%
23	LUBLIN	33,69%	37,33%
24	TORUŃ	31,61%	37,07%
25	ZAMOŚĆ	31,10%	36,82%
26	BIAŁYSTOK	34,43%	36,82%
27	Biała Podlaska	32,50%	36,70%
28	LEGNICA	31,83%	36,29%
29	POZNAŃ	32,94%	36,20%
30	WROCŁAW	33,70%	35,39%
31	ELBLĄG	29,38%	35,32%
32	KRAKÓW	32,67%	34,61%
33	KIELCE	30,68%	34,33%
34	KATOWICE	30,59%	34,15%
35	GORZÓW Wlkp.	30,06%	33,78%
36	BYDGOSZCZ	28,84%	33,71%

37	BIELSKO BIAŁA	32,56%	33,68%
38	SŁUPSK	29,69%	33,61%
39	CZĘSTOCHOWA	28,78%	33,17%
40	WAŁBRZYCH	30,65%	33,11%
41	PIŁA	28,02%	33,11%
42	PIOTRKÓW TR	29,31%	32,83%
43	OPOLE	29,17%	32,06%
44	SKIERNIEWICE	30,83%	31,95%
45	WARSZAWA	31,57%	31,37%
46	GDAŃSK	27,48%	30,70%
47	SZCZECIN	25,92%	27,89%
48	KOSZALIN	23,97%	27,24%
49	ŁÓDŹ	24,54%	25,29%

	MAXIMUM	49,74%	56,38%
	MINIMUM	23,97%	25,29%
	ŚREDNIA	33,30%	37,52%

legenda:

"Global" wszystkie podejścia [P/L] - P liczba wyników pozytywnych / L liczba egzaminów faktycznie przeprowadzonych (kol.10 – kol.19),

"I podejście" po szkoleniu podstawowym w OSK - P liczba wyników pozytywnych / L liczba egzaminów faktycznie przeprowadzonych.

kopiowanie, przetwarzanie, publikowanie bez zgody **zabronione!**

18 maja 2024

opracował: **Roman Stencel**