

# Zdawalność egzaminów praktycznych kat. B prawa jazdy / na podstawie danych pozyskanych z 49 WORD-ów ( Wojewódzki Ośrodek Ruchu Drogowego)

uporządkowanie wg. **Global 2017**

	Global	Global	Global	Global	I podejście	Global	I podejście	Global	I podejście	Global	I podejście	Global	I podejście	Global	I podejście	Global	I podejście	Global	I podejście	Global	I podejście
WORD \ Rok	2006R	2007R	2008R	2009R	2009R	2010R	2010R	2011R	2011R	2012R	2012R	2013R	2013R	2014R	2014R	2015R	2015R	2016R	2016R	2017R	2017R
OSTROŁĘKA	47,10%	44,30%	45,90%	43,20%	50,10%	48,00%	52,40%	46,00%	52,90%	47,21%	53,65%	47,60%	54,88%	52,87%	58,04%	51,36%	58,03%	51,52%	58,84%	54,19%	60,28%
JELEŃ G.	30,60%	26,60%	27,30%	26,00%	27,30%	27,80%	29,30%	29,40%	31,40%	29,30%	30,50%	32,17%	32,83%	38,09%	43,33%	43,46%	47,44%	45,33%	51,67%	46,91%	52,74%
PŁOCK	37,70%	35,20%	31,30%	31,00%	34,50%	34,20%	37,50%	35,40%	39,70%	36,70%	40,10%	38,62%	47,55%	43,91%	50,15%	41,59%	47,68%	43,60%	50,34%	46,85%	55,34%
ŁOMŻA	41,70%	41,80%	42,90%	43,50%	43,20%	43,70%	43,30%	42,80%	41,80%	42,30%	41,00%	46,10%	47,20%	49,45%	53,23%	46,60%	50,54%	46,18%	51,19%	46,18%	51,17%
RZESZÓW	31,50%	34,80%	33,60%	35,80%	37,70%	36,90%	40,10%	39,10%	41,70%	38,70%	41,30%	36,43%	43,58%	44,54%	49,59%	41,91%	45,90%	41,50%	46,62%	42,43%	50,23%
SUWAŁKI	35,60%	32,60%	36,70%	38,60%	40,70%	39,40%	43,00%	39,90%	43,20%	39,00%	43,50%	41,60%	48,20%	44,77%	50,48%	43,21%	47,96%	39,89%	47,76%	42,03%	50,26%
WŁOCŁAWEK	30,90%	30,90%	28,60%	27,20%	28,20%	24,60%	26,70%	27,40%	31,20%	31,60%	35,80%	33,43%	41,24%	39,49%	46,03%	40,91%	47,78%	40,87%	49,18%	41,21%	48,31%
SIEDLCE	32,20%	31,30%	32,80%	32,10%	34,40%	34,10%	36,80%	34,30%	37,20%	34,00%	37,90%	35,20%	41,92%	38,43%	44,95%	40,37%	45,88%	38,98%	47,04%	41,06%	49,70%
WROCŁAW	30,90%	31,60%	29,90%	28,90%	28,30%	25,10%	25,50%	24,30%	22,60%	27,20%	26,50%	29,97%	30,20%	30,51%	32,09%	29,46%	30,78%	35,78%	38,19%	39,88%	42,96%
TARNOBRZEG	30,50%	32,30%	30,60%	28,50%	30,40%	31,20%	33,00%	30,60%	32,60%	31,70%	35,00%	33,89%	40,86%	41,02%	48,75%	39,90%	46,40%	39,25%	47,06%	39,79%	47,47%
BIALYSTOK	30,90%	30,30%	33,70%	31,80%	33,20%	31,60%	30,80%	30,70%	29,40%	26,90%	26,40%	28,28%	31,30%	34,68%	37,07%	38,00%	41,82%	39,79%	44,13%	38,71%	42,60%
LUBLIN	28,30%	28,90%	27,80%	26,70%	26,20%	28,10%	29,10%	29,60%	29,90%	29,40%	29,70%	30,49%	32,67%	31,83%	33,67%	32,68%	35,69%	34,66%	39,09%	37,82%	43,08%
KALISZ	31,90%	36,20%	35,60%	32,20%	36,60%	31,20%	35,80%	31,00%	35,00%	29,70%	32,70%	30,25%	33,96%	31,90%	35,67%	32,19%	35,82%	33,80%	39,84%	37,40%	45,15%
LESZNO	26,50%	30,80%	30,90%	28,10%	30,90%	33,90%	39,90%	31,70%	36,30%	29,30%	33,20%	30,26%	34,84%	34,25%	37,96%	33,85%	39,34%	33,94%	40,24%	37,34%	45,34%
Biała Podlaska	30,70%	31,00%	29,20%	28,20%	28,10%	27,90%	27,50%	31,60%	33,20%	32,10%	34,60%	31,77%	38,00%	40,66%	45,01%	39,64%	44,27%	38,02%	44,45%	37,04%	44,13%
KRAKÓW	32,60%	29,80%	29,20%	31,60%	32,20%	30,50%	31,00%	29,13%	28,84%	30,17%	28,82%	30,71%	32,93%	34,61%	37,23%	43,27%	40,29%	38,30%	42,31%	36,29%	40,41%
CIECHANÓW	32,40%	31,10%	30,80%	31,10%	35,70%	35,70%	40,30%	35,10%	41,80%	30,20%	36,50%	32,32%	40,55%	39,77%	46,90%	36,40%	43,05%	33,09%	40,07%	35,93%	43,78%
SKIERNIEWICE	26,20%	31,00%	30,00%	31,30%	31,10%	29,00%	28,00%	27,70%	25,10%	26,70%	25,30%	28,30%	29,47%	30,40%	28,93%	33,87%	33,49%	31,86%	34,09%	35,84%	37,49%
OLSZTYN	32,40%	35,30%	36,00%	35,40%	38,10%	36,80%	40,10%	36,80%	39,60%	34,50%	38,90%	36,32%	40,68%	33,27%	38,68%	34,63%	38,17%	34,84%	40,18%	35,69%	41,87%
SIERADZ	36,90%	36,50%	34,90%	33,90%	37,80%	33,90%	38,80%	32,40%	36,50%	31,00%	35,00%	31,64%	37,81%	35,19%	40,80%	32,97%	37,98%	33,10%	39,67%	35,40%	41,87%
PRZEMYŚL	37,70%	31,10%	27,70%	27,50%	27,30%	30,80%	31,40%	34,00%	35,20%	34,20%	36,60%	32,52%	36,68%	37,76%	41,23%	38,29%	41,83%	33,34%	37,80%	35,39%	40,88%
NOWY SĄCZ	38,50%	38,10%	39,00%	38,40%	41,00%	40,30%	41,80%	39,80%	39,80%	36,89%	38,33%	34,43%	38,11%	33,07%	33,97%	34,91%	36,85%	36,23%	40,25%	35,11%	40,10%
KROSNO	43,80%	45,70%	43,90%	38,40%	43,80%	35,90%	38,70%	36,90%	41,00%	33,80%	38,10%	32,51%	38,30%	38,56%	46,57%	38,83%	47,26%	37,07%	45,62%	34,88%	45,19%
KONIN	32,70%	33,30%	33,40%	32,10%	32,60%	29,80%	30,90%	30,60%	31,00%	30,10%	31,50%	30,87%	33,67%	31,18%	36,11%	32,85%	38,22%	34,19%	41,09%	34,71%	41,45%
RADOM	33,50%	31,40%	36,10%	32,40%	36,20%	32,10%	35,90%	32,70%	36,70%	33,60%	37,70%	33,17%	40,61%	37,34%	42,85%	36,80%	41,90%	35,34%	41,77%	34,32%	40,20%
WARSZAWA	29,30%	28,90%	30,00%	27,30%	24,30%	25,50%	22,20%	28,00%	24,90%	29,00%	26,00%	31,40%	30,60%	32,46%	32,22%	33,12%	34,15%	32,63%	33,89%	34,03%	34,32%
ZAMOŚĆ	30,30%	31,30%	29,20%	26,00%	27,20%	24,30%	24,20%	24,50%	25,90%	27,70%	30,00%	28,70%	35,28%	30,93%	35,37%	31,59%	36,79%	29,92%	37,64%	33,69%	42,27%
CHEŁM	27,60%	26,80%	29,20%	29,70%	31,60%	29,80%	31,70%	28,10%	29,40%	29,00%	31,90%	29,53%	34,28%	32,64%	36,83%	31,91%	35,61%	32,72%	38,83%	33,65%	40,35%
TORUŃ	38,90%	39,30%	34,80%	31,10%	32,90%	29,10%	31,80%	28,90%	30,20%	29,00%	30,60%	30,78%	36,21%	33,28%	38,22%	33,37%	37,33%	34,43%	41,18%	33,56%	40,61%
WAŁBRZYCH	22,90%	28,90%	24,80%	23,70%	20,60%	26,07%	25,72%	24,19%	22,15%	26,78%	26,06%	25,74%	24,25%	28,09%	28,28%	31,05%	32,41%	30,00%	34,09%	33,47%	38,63%
KIELCE	27,20%	27,00%	30,60%	29,90%	28,30%	28,40%	28,60%	28,60%	30,20%	29,10%	30,70%	29,10%	31,12%	31,64%	34,91%	31,46%	36,13%	31,57%	36,66%	33,33%	39,57%
Zielona G.	26,70%	30,50%	30,60%	30,20%	30,50%	31,60%	32,30%	33,70%	35,30%	34,80%	35,00%	36,06%	39,35%	37,64%	40,59%	35,68%	37,87%	32,31%	36,94%	32,71%	37,88%
BIELSKO BIAŁA	32,10%	32,80%	34,60%	31,70%	29,20%	32,50%	30,80%	32,30%	30,20%	30,20%	28,90%	31,21%	30,89%	33,86%	34,84%	34,38%	35,90%	32,02%	32,87%	32,41%	35,36%
LEGNICA	30,30%	26,90%	29,80%	30,40%	30,90%	31,00%	32,90%	31,00%	33,20%	32,80%	36,00%	32,59%	38,23%	35,34%	41,52%	33,75%	38,26%	30,88%	35,68%	32,02%	35,71%
TARNÓW	26,40%	28,50%	31,90%	32,40%	34,80%	29,10%	31,10%	29,90%	32,70%	31,50%	35,70%	33,42%	38,78%	35,48%	40,92%	33,75%	39,68%	31,98%	39,45%	31,66%	40,51%

SŁUPSK	29,50%	29,00%	29,70%	28,70%	26,50%	27,90%	26,30%	27,40%	27,20%	26,60%	26,50%	28,22%	32,38%	32,70%	37,37%	29,42%	33,45%	29,92%	35,00%	31,37%	39,40%
PIOTRKÓW TR	32,90%	36,50%	32,90%	31,50%	34,30%	30,40%	31,90%	29,70%	29,80%	29,40%	30,80%	31,80%	37,10%	33,50%	38,89%	31,44%	34,23%	29,31%	32,27%	31,10%	35,92%
KATOWICE	30,60%	35,20%	31,30%	35,60%	35,50%	31,40%	33,20%	30,50%	32,70%	30,10%	32,50%	27,74%	31,79%	28,50%	31,65%	30,36%	34,02%	30,71%	35,16%	30,75%	36,11%
CZĘSTOCHOWA	37,90%	35,80%	33,70%	31,70%	33,80%	28,70%	30,90%	28,20%	31,00%	25,70%	28,90%	27,94%	32,76%	30,00%	34,65%	27,52%	31,14%	30,17%	35,96%	30,72%	36,85%
POZNAŃ	41,90%	42,50%	37,70%	35,90%	39,20%	31,30%	33,60%	32,20%	33,40%	30,00%	30,70%	31,00%	31,31%	30,50%	33,72%	30,50%	33,18%	29,22%	32,18%	30,43%	33,24%
GORZÓW Wlkp.	35,20%	34,70%	32,50%	31,00%	31,80%	29,10%	28,40%	32,00%	32,90%	32,50%	33,50%	28,52%	33,73%	33,34%	36,83%	33,31%	36,12%	31,88%	36,56%	30,14%	37,27%
BYDGOSZCZ	33,95%	30,70%	28,00%	30,20%	30,60%	27,60%	30,00%	25,80%	26,30%	26,30%	25,80%	25,28%	29,06%	28,96%	33,72%	30,16%	36,64%	28,85%	33,85%	29,83%	36,57%
GDAŃSK	29,05%	29,32%	31,53%	25,49%	25,10%	23,90%	24,25%	23,70%	23,30%	22,20%	21,20%	26,77%	27,81%	27,57%	31,01%	29,43%	34,15%	28,04%	31,84%	29,71%	35,94%
ELBLĄG	27,90%	29,80%	28,20%	27,20%	30,20%	28,40%	31,60%	30,10%	33,90%	32,20%	36,10%	35,22%	40,83%	35,53%	43,81%	32,05%	38,62%	30,63%	38,26%	29,47%	35,19%
OPOLE	35,80%	32,70%	28,40%	28,90%	29,50%	29,10%	29,80%	27,40%	27,30%	28,80%	28,80%	26,88%	30,41%	26,67%	28,66%	27,58%	28,57%	30,54%	34,25%	29,19%	32,77%
ŁÓDŹ	22,00%	24,70%	24,30%	23,20%	21,26%	22,79%	21,06%	22,60%	21,76%	21,60%	20,16%	22,12%	21,93%	28,16%	29,66%	26,24%	26,41%	26,33%	27,93%	28,04%	30,66%
SZCZECIN	35,60%	37,10%	31,60%	27,10%	28,20%	27,60%	28,00%	24,10%	24,10%	23,00%	21,70%	25,06%	25,03%	25,39%	27,16%	27,77%	29,77%	27,45%	29,99%	27,90%	31,40%
PIŁA	36,10%	34,30%	32,30%	29,00%	31,60%	24,80%	25,20%	24,50%	25,60%	24,70%	26,50%	25,30%	28,70%	26,70%	30,47%	25,09%	27,51%	25,27%	29,46%	27,50%	33,70%
KOSZALIN	29,10%	27,90%	25,60%	25,70%	26,10%	27,10%	29,30%	25,00%	25,90%	23,40%	24,80%	21,83%	23,71%	23,57%	27,00%	21,25%	23,86%	21,58%	24,74%	23,16%	27,51%
	2006R	2007R	2008R	2009R	2009R	2010R	2010R	2011R	2011R	2012R	2012R	2013R	2013R	2014R	2014R	2015R	2015R	2016R	2016R	2017R	2017R
	Global	Global	Global	Global	IP	Global	IP	Global	IP	Global	IP	Global	IP	Global	IP	Global	IP	Global	IP	Global	IP
MAXIMUM	47,10%	45,70%	45,90%	43,50%	50,10%	48,00%	52,40%	46,00%	52,90%	47,21%	53,65%	47,60%	54,88%	52,87%	58,04%	51,36%	58,03%	51,52%	58,84%	54,19%	60,28%
MINIMUM	22,00%	24,70%	24,30%	23,20%	20,60%	22,79%	21,06%	22,60%	21,76%	21,60%	20,16%	21,83%	21,93%	23,57%	27,00%	21,25%	23,86%	21,58%	24,74%	23,16%	27,51%
ŚREDNIA	32,51%	32,71%	32,06%	30,97%	32,24%	30,82%	32,29%	30,84%	32,31%	30,67%	32,40%	31,45%	35,38%	34,49%	38,52%	34,49%	38,29%	34,06%	39,25%	35,15%	41,02%

legenda:

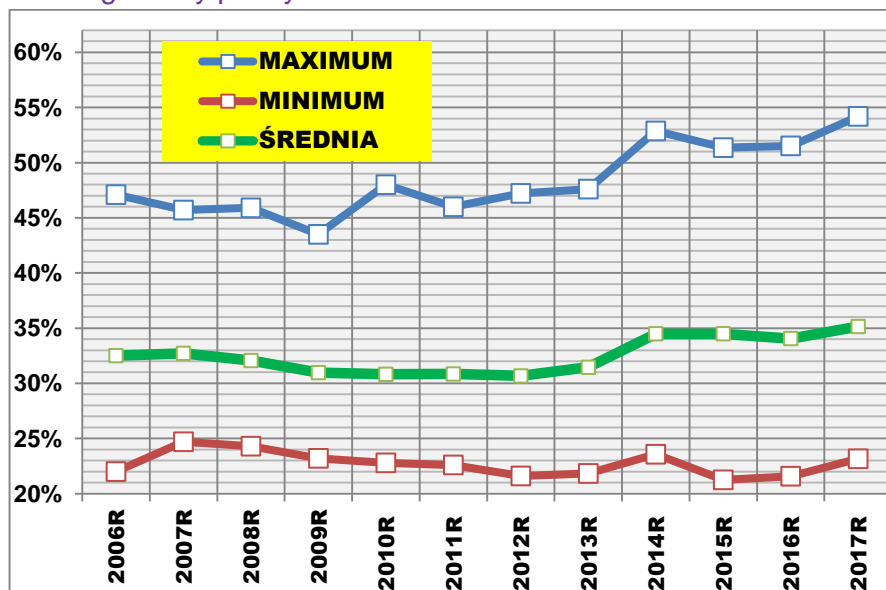
"global" [ P/L]

- P liczba wyników pozytywnych / L liczba egzaminów faktycznie przeprowadzonych (kol.10 – kol.19),

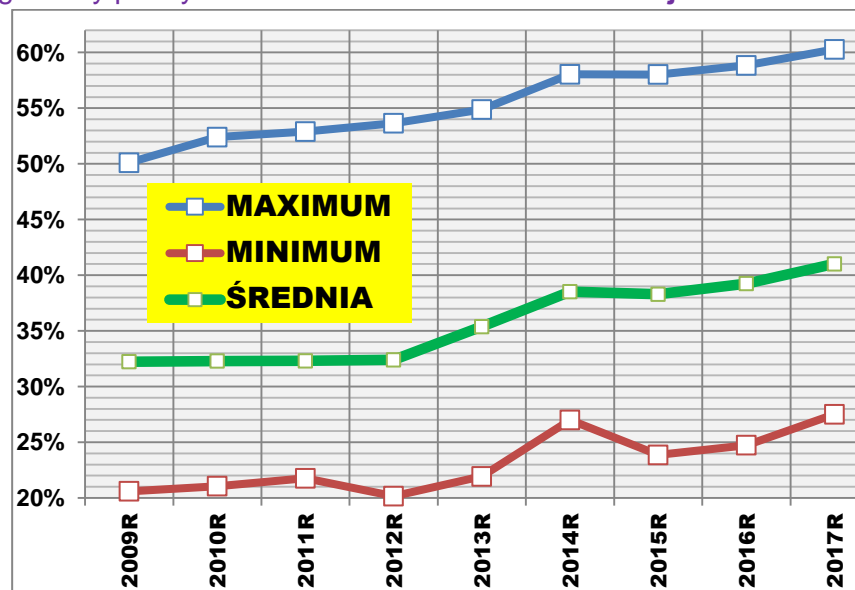
"I podejście" po szkoleniu podstawowym

- P liczba wyników pozytywnych / L liczba egzaminów faktycznie przeprowadzonych.

Egzaminy praktyczne kat. B wariant "Global"



Egzaminy praktyczne kat. B wariant "Pierwsze Podejście"



# Dziesięć WORD-ów z górnej i dolnej "półki"

**Ranking Word-ów** wg. średniej zdawalność egzaminów praktycznych kat. B wariant "Global"  
**narastająco** w okresie **12 lat: 2006 - 2017**

1	OSTROŁĘKA	48,27%
2	ŁOMŻA	44,43%
3	SUWAŁKI	39,44%
4	KROSNO	38,35%
5	RZESZÓW	38,10%
6	PŁOCK	38,01%
7	NOWY SĄCZ	37,06%
8	SIEDLCE	35,40%
9	OLSZTYN	35,16%
10	TARNOBRZEG	34,10%
11	RADOM	34,06%
12	SIERADZ	33,98%
13	CIECHANÓW	33,66%
14	POZNAŃ	33,60%
15	JELEŃ G.	33,58%
16	PRZEMYŚL	33,36%
17	Biała Podlaska	33,15%

18	WŁOCŁAWEK	33,09%
19	TORUŃ	33,04%
20	KRAKÓW	33,02%
21	BIAŁYSTOK	32,95%
22	KALISZ	32,78%
23	Zielona G.	32,71%
24	BIELSKO BIAŁA	32,51%
25	KONIN	32,15%
26	GORZÓW Wlkp.	32,02%
27	LESZNO	31,74%
28	PIOTRKÓW TR	31,70%
29	LEGNICA	31,40%
30	TARNÓW	31,33%
31	KATOWICE	31,06%
32	CZĘSTOCHOWA	30,67%
33	ELBLĄG	30,56%
34	LUBLIN	30,52%

35	WROCŁAW	30,29%
36	SKIERNIEWICE	30,18%
37	WARSZAWA	30,14%
38	CHEŁM	30,05%
39	KIELCE	29,83%
40	<b>SŁUPSK</b>	29,40%
41	<b>OPOLE</b>	29,33%
42	<b>ZAMOŚĆ</b>	28,82%
43	<b>BYDGOSZCZ</b>	28,80%
44	<b>SZCZECIN</b>	28,31%
45	<b>PIŁA</b>	27,96%
46	<b>GDAŃSK</b>	27,23%
47	<b>WAŁBRZYCH</b>	27,14%
48	<b>KOSZALIN</b>	24,60%
49	<b>ŁÓDŹ</b>	24,34%

20180225

opracował: **Roman Stencel**

kopiowanie, przetwarzanie, publikowanie bez zgody **zabronione!**